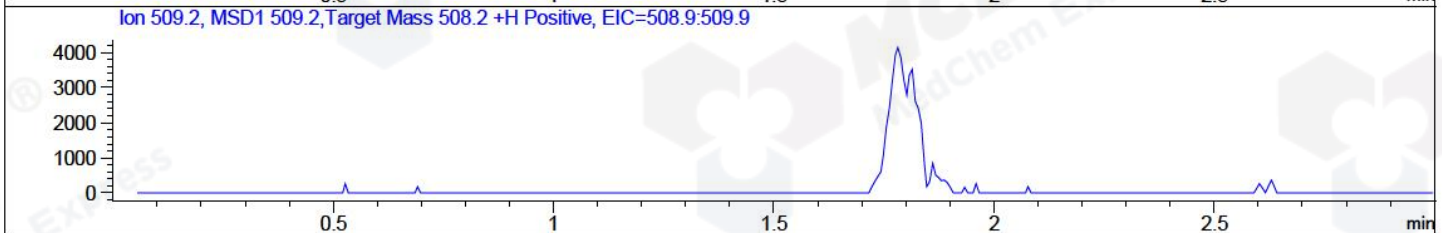
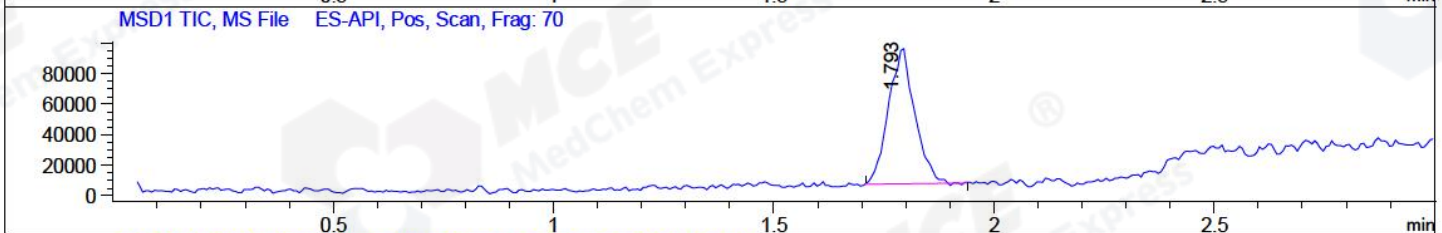
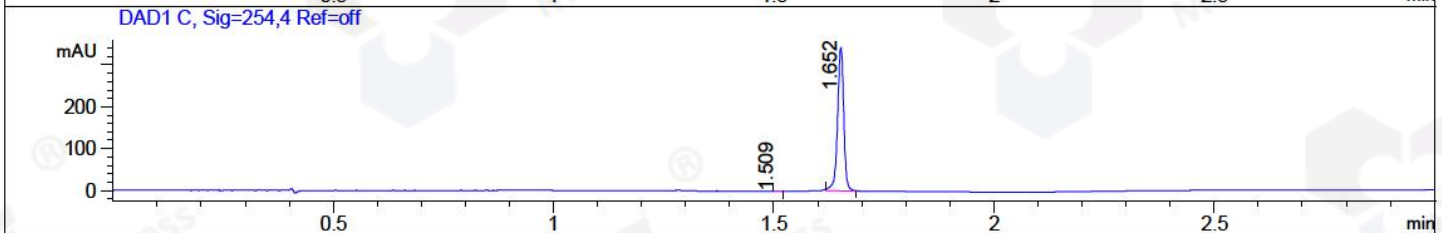
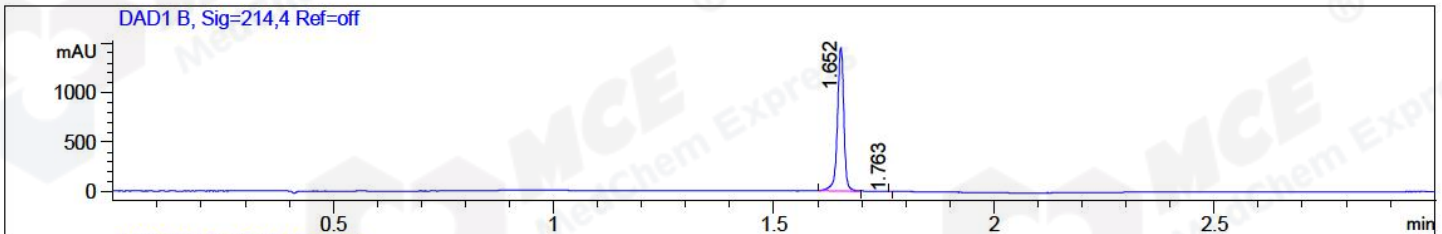


File ..1\DATA\2018\20180910\382\BIZ2018-910-CXL3.D Tgt Mass (CHM):  
 Injection Date : 10 Sep 18 6:17 pm +0800 Seq. Line : 15  
 Sample Name : BIZ2018-910-CXL3 Location : P2-E-06  
 Acq. Operator : LQ\_1052 Inj : 1  
 Spec. Reported : MS Integration Inj Volume : 1 ul  
 Acq. Method : D:\Chem32\1\data\2018\20180910\382\1-POS-3MIN-1.M  
 Analysis Method : D:\CHEM32\1\DATA\2018\20180910\382\1-POS-3MIN-1.M  
 Catalog No : HY-13205 Batch#32669 A-RP-314  
 Method Info : Mobile Phase: A: water(0.01%TFA) B:ACN(0.01%TFA)  
 Gradient: 5% to 95%B within 1.3 min  
 Flow Rate :1.8ml/min  
 Column :SunFire C18, 4.6\*50mm,3.5um A-RP-314  
 Oven Temperature : 45□



Integration Results for DAD1 B, Sig=214,4 Ref=off

RetTim	Width	Area	Height	Area%	MS (+)
1.65	0.02	1467.26	1447.63	99.99	ND
1.76	0.01	0.11	0.33	0.01	243

Integration Results for DAD1 C, Sig=254,4 Ref=off

RetTim	Width	Area	Height	Area%	MS (+)
1.51	0.01	0.26	0.30	0.08	ND
1.65	0.01	333.71	341.21	99.92	ND

Integration Results for MSD1 TIC, MS File

RetTim	Width	Area	Height	Area%	MS (+)
1.79	0.05	370638.41	89966.62	100.00	243

Ret. Time: 1.79

<<<< POSITIVE SPECTRA >>>>

ES-API Positive

