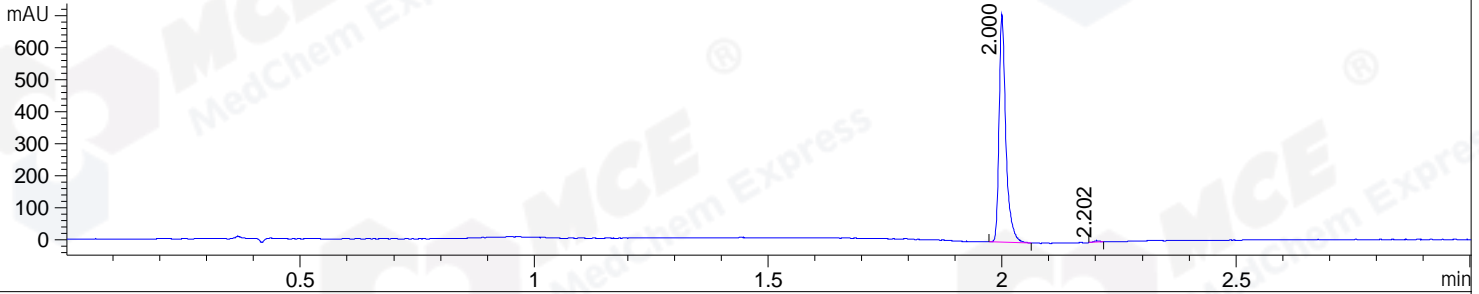
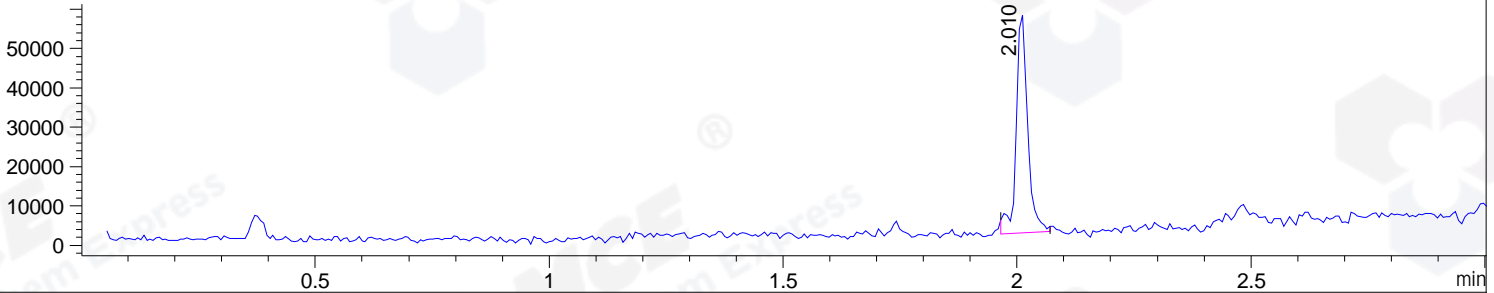


File ..\DATA\2020\20200430\943\BIZ2020-429-WMX2-.D Tgt Mass (CHM):
 Injection Date : 30 Apr 20 1:43 pm +0800 Seq. Line : 61
 Sample Name : BIZ2020-429-WMX2 Location : PL-C-09
 Acq. Operator : ZJ_1432 Inj : 1
 Spec. Reported : MS Integration Inj Volume : 0.5 ul
 Acq. Method : D:\Chem32\1\data\2020\20200430\943\1-POS-3MIN.M
 Analysis Method : D:\CHEM32\1\DATA\2020\20200430\943\1-POS-3MIN.M
 Catalog No : HY-13212
 Method Info : Mobile Phase: A: water(0.01%TFA) B:ACN(0.01%TFA)
 Gradient: 5% to 95%B within 1.3 min
 Flow Rate :1.8ml/min
 Column :SunFire C18, 4.6*50mm,3.5um A-RP-607
 Oven Temperature : 45

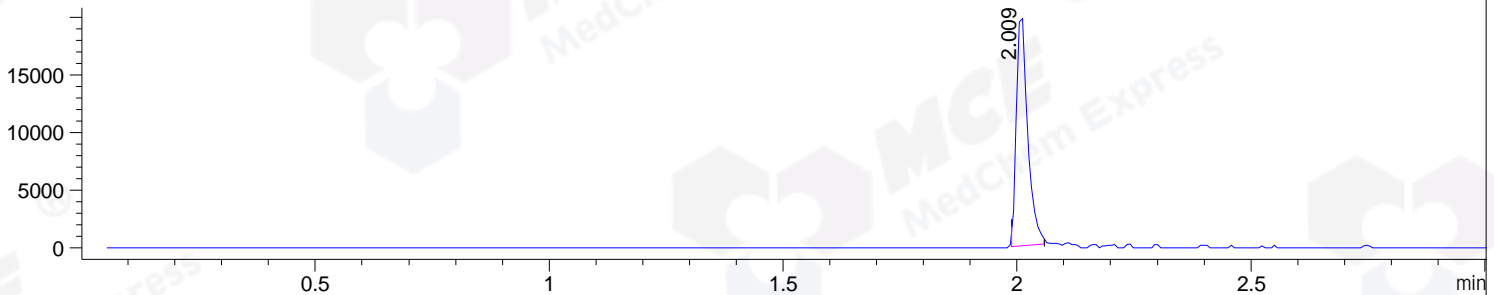
DAD1 B, Sig=214,4 Ref=off



MSD1 TIC, MS File ES-API, Pos, Scan, Frag: 70



Ion 171, MSD1 171, Target Mass 170 +H Positive, EIC=170.7:171.7



Integration Results for DAD1 B, Sig=214,4 Ref=off

RetTim	Width	Area	Height	Area%	MS (+)
2.00	0.02	716.25	712.17	99.46	171
2.20	0.01	3.88	4.58	0.54	ND

Integration Results for MSD1 TIC, MS File

RetTim	Width	Area	Height	Area%	MS (+)
2.01	0.02	94186.34	56442.01	100.00	171

Ret. Time: 2.01

<<<< POSITIVE SPECTRA >>>>

ES-API Positive

