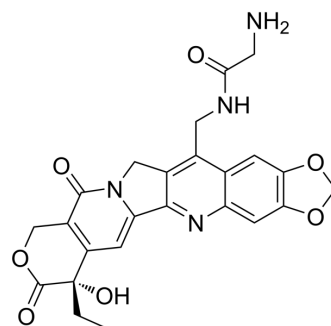


## Gly-7-MAD-MDCPT

Cat. No.:	HY-132164
CAS No.:	2378427-68-8
Molecular Formula:	C <sub>24</sub> H <sub>22</sub> N <sub>4</sub> O <sub>7</sub>
Molecular Weight:	478.45
Target:	ADC Cytotoxin; Topoisomerase
Pathway:	Antibody-drug Conjugate/ADC Related; Cell Cycle/DNA Damage
Storage:	4°C, protect from light * In solvent : -80°C, 6 months; -20°C, 1 month (protect from light)



### SOLVENT & SOLUBILITY

#### In Vitro

DMSO : 50 mg/mL (104.50 mM; Need ultrasonic)

Concentration	Mass			
	1 mg	5 mg	10 mg	
1 mM	2.0901 mL	10.4504 mL	20.9008 mL	
5 mM	0.4180 mL	2.0901 mL	4.1802 mL	
10 mM	0.2090 mL	1.0450 mL	2.0901 mL	

Please refer to the solubility information to select the appropriate solvent.

### BIOLOGICAL ACTIVITY

#### Description

Gly-7-MAD-MDCPT (compound 4b) is an anticancer agent. Gly-7-MAD-MDCPT is a [Camptothecin](#) (HY-16560) compound, it shows cytotoxicity to various cancer cells with IC<sub>50</sub> values of 10-1000 nM<sup>[1]</sup>.

#### In Vitro

Gly-7-MAD-MDCPT (0.1-1000 nM) shows cytotoxic potency to 786-0, BxPC3, HL-60 and SK-MEL-5 with IC<sub>50</sub> values of 100-1000 nM<sup>[1]</sup>.

Gly-7-MAD-MDCPT (0.1-1000 nM) shows cytotoxic potency to L540cy, MM.1R, M0LM13, Ramos, SK-MEL-5, SU-DHL-4 and U266 with IC<sub>50</sub> values of 10-100 nM<sup>[1]</sup>.

MCE has not independently confirmed the accuracy of these methods. They are for reference only.

### REFERENCES

[1]. Jeffrey Scott, et al. Preparation of camptothecin peptide conjugates as antitumor agents. WO2019195665. 2019 10-10.

---

**Caution: Product has not been fully validated for medical applications. For research use only.**

Tel: 609-228-6898

Fax: 609-228-5909

E-mail: [tech@MedChemExpress.com](mailto:tech@MedChemExpress.com)

Address: 1 Deer Park Dr, Suite Q, Monmouth Junction, NJ 08852, USA