

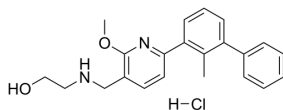
PD-1/PD-L1-IN-9 (hydrochloride)

Cat. No.: HY-132192A
Batch No.: 243673
Chemical Name: Ethanol, 2-[[[2-methoxy-6-(2-methyl[1,1'-biphenyl]-3-yl)-3-pyridinyl]methyl]amino]- (hydrochloride)

PHYSICAL AND CHEMICAL PROPERTIES

Molecular Formula: C₂₂H₂₅ClN₂O₂
Molecular Weight: 384.90
Storage: 4°C, sealed storage, away from moisture
* In solvent : -80°C, 6 months; -20°C, 1 month (sealed storage, away from moisture)

Chemical Structure:



ANALYTICAL DATA

Appearance: White to off-white (Solid)
¹H NMR Spectrum: Consistent with structure
LCMS: Consistent with structure
Purity (LCMS): 99.26%
Conclusion: The product has been tested and complies with the given specifications.

Caution: Product has not been fully validated for medical applications. For research use only.

Tel: 609-228-6898

Fax: 609-228-5909

E-mail: tech@MedChemExpress.com

Address: 1 Deer Park Dr, Suite Q, Monmouth Junction, NJ 08852, USA