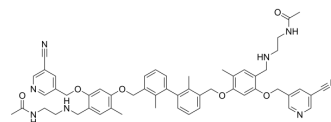


LH1307

Cat. No.:	HY-132212
CAS No.:	2375720-38-8
Molecular Formula:	C ₅₄ H ₅₈ N ₈ O ₆
Molecular Weight:	915.09
Target:	PD-1/PD-L1
Pathway:	Immunology/Inflammation
Storage:	Please store the product under the recommended conditions in the Certificate of Analysis.



BIOLOGICAL ACTIVITY

Description	LH1307 is a C2-symmetric inhibitor of PD-1/PD-L1 protein-protein interactions with a IC ₅₀ value of 3.0 μM and can be used in cancer studies ^[1] .
IC ₅₀ & Target	IC50: 3.0 μM (PD-1/PD-L1) ^[1] .

REFERENCES

[1]. Basu S, et al. Design, Synthesis, Evaluation, and Structural Studies of C2-Symmetric Small Molecule Inhibitors of Programmed Cell Death-1/Programmed Death-Ligand 1 Protein-Protein Interaction. J Med Chem. 2019 Aug 8;62(15):7250-7263.

Caution: Product has not been fully validated for medical applications. For research use only.

Tel: 609-228-6898

Fax: 609-228-5909

E-mail: tech@MedChemExpress.com

Address: 1 Deer Park Dr, Suite Q, Monmouth Junction, NJ 08852, USA