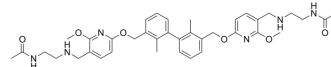


## LH1306

Cat. No.:	HY-132223
CAS No.:	2182653-84-3
Molecular Formula:	C <sub>38</sub> H <sub>48</sub> N <sub>6</sub> O <sub>6</sub>
Molecular Weight:	684.82
Target:	PD-1/PD-L1
Pathway:	Immunology/Inflammation
Storage:	Please store the product under the recommended conditions in the Certificate of Analysis.



## BIOLOGICAL ACTIVITY

Description	LH1306 is a C2-symmetric inhibitor of PD-1/PD-L1 protein-protein interaction (PPI), with an IC <sub>50</sub> value of 25 nM. LH1306 can be used in anti-tumor research <sup>[1]</sup> .
IC <sub>50</sub> & Target	IC50: 25 nM (PD-1/PD-L1) <sup>[1]</sup> .

## REFERENCES

[1]. Basu S, et al. Design, synthesis, evaluation, and structural studies of C 2-symmetric small molecule inhibitors of programmed cell death-1/programmed death-ligand 1 protein-protein interaction[J]. Journal of Medicinal Chemistry, 2019, 62(15): 7250-7263.

**Caution: Product has not been fully validated for medical applications. For research use only.**

Tel: 609-228-6898

Fax: 609-228-5909

E-mail: tech@MedChemExpress.com

Address: 1 Deer Park Dr, Suite Q, Monmouth Junction, NJ 08852, USA