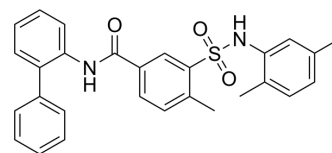


SF-22

Cat. No.:	HY-132240		
CAS No.:	824981-55-7		
Molecular Formula:	C ₂₈ H ₂₆ N ₂ O ₃ S		
Molecular Weight:	470.58		
Target:	Neuropeptide Y Receptor		
Pathway:	GPCR/G Protein; Neuronal Signaling		
Storage:	Powder	-20°C	3 years
		4°C	2 years
	In solvent	-80°C	6 months
		-20°C	1 month



SOLVENT & SOLUBILITY

In Vitro

DMSO : 125 mg/mL (265.63 mM; Need ultrasonic)

Concentration	Mass		
	1 mg	5 mg	10 mg
1 mM	2.1250 mL	10.6252 mL	21.2504 mL
5 mM	0.4250 mL	2.1250 mL	4.2501 mL
10 mM	0.2125 mL	1.0625 mL	2.1250 mL

Please refer to the solubility information to select the appropriate solvent.

BIOLOGICAL ACTIVITY

Description

SF-22 is a potent and brain-penetrant antagonist of neuropeptide Y receptor (Y2R), with the IC₅₀ value of 750 nM. SF-22 plays an important role in neurological disease^[1].

REFERENCES

[1]. P Brothers, et al. Selective and brain penetrant neuropeptide y2 receptor antagonists discovered by whole-cell high-throughput screeningShaun. Mol Pharmacol. 2010 Jan;77(1):46-57.

Caution: Product has not been fully validated for medical applications. For research use only.

Tel: 609-228-6898

Fax: 609-228-5909

E-mail: tech@MedChemExpress.com

Address: 1 Deer Park Dr, Suite Q, Monmouth Junction, NJ 08852, USA