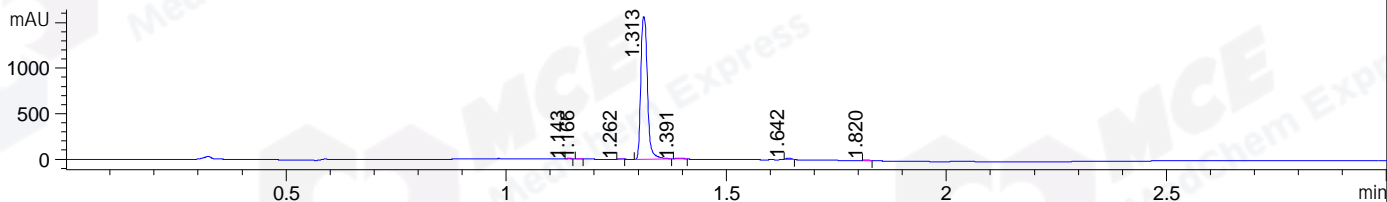
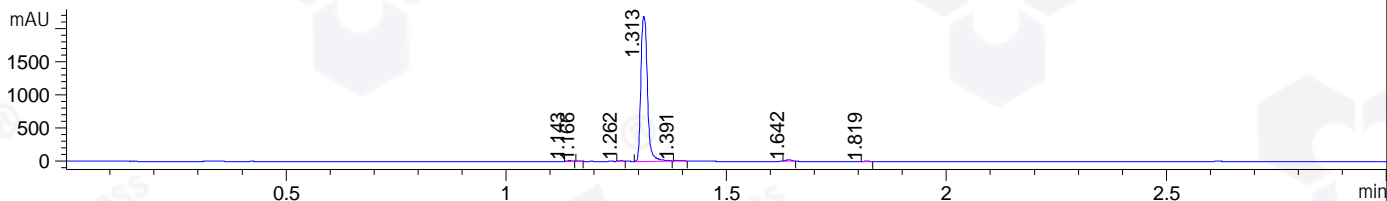


File ..DATA\2021\20210330\1319\CPK2021-329-05494.D Tgt Mass (CHM):
Injection Date : 30 Mar 21 1:15 pm +0800 Seq. Line : 54
Sample Name : CPK2021-329-05494 Location : P1-D-07
Acq. Operator : yrz_1364 Inj : 1
Spec. Reported : MS Integration Inj Volume : 1 ul
Acq. Method : D:\Chem32\1\data\2021\20210330\1319\1-POS-3MIN.M
Analysis Method : D:\CHEM32\1\DATA\2021\20210330\1319\1-POS-3MIN.M
CAS NO. : 371942-69-7
Method Info : Mobile Phase: A: water(0.01%TFA) B:ACN(0.01%TFA)
Gradient: 5% to 95%B within 1.3 min
Flow Rate :1.8ml/min
Column :SunFire C18, 4.6*50mm,3.5um A-RP-698

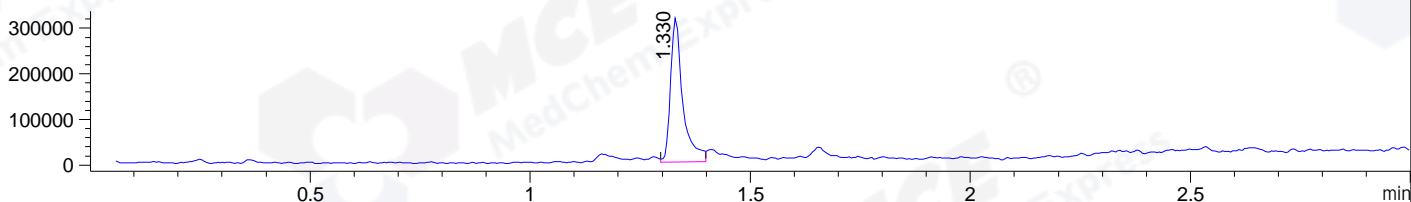
DAD1 B, Sig=214,4 Ref=off



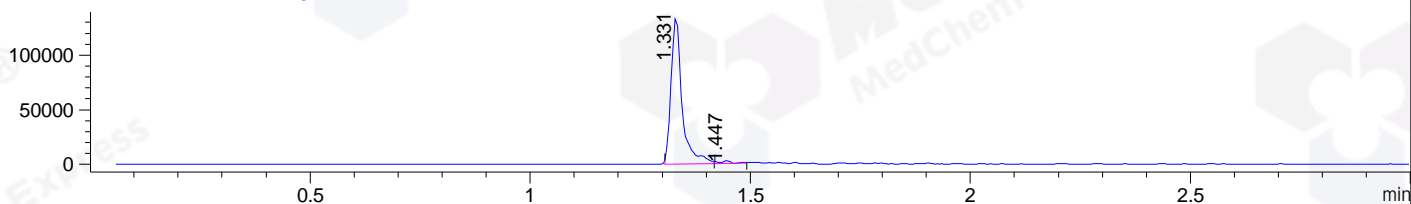
DAD1 C, Sig=254,4 Ref=off



MSD1 TIC, MS File ES-API, Pos, Scan, Frag: 70



Ion 468, MSD1 468, Target Mass 467 +H Positive, EIC=467.7:468.7



Integration Results for DAD1 B, Sig=214,4 Ref=off

RetTim	Width	Area	Height	Area%	MS (+)
1.14	0.01	4.01	6.44	0.24	503
1.17	0.01	1.57	2.72	0.09	503
1.26	0.01	3.19	5.37	0.19	ND
1.31	0.02	1629.35	1566.78	98.01	468
1.39	0.02	8.36	7.43	0.50	468
1.64	0.01	11.08	14.81	0.67	390
1.82	0.01	4.80	6.49	0.29	ND

Integration Results for DAD1 C, Sig=254,4 Ref=off

RetTim	Width	Area	Height	Area%	MS (+)
1.14	0.01	6.66	9.66	0.29	503
1.17	0.01	1.28	2.34	0.06	503
1.26	0.01	5.23	8.60	0.23	ND
1.31	0.02	2243.90	2191.83	98.01	468
1.39	0.02	8.71	8.35	0.38	468
1.64	0.01	18.98	22.51	0.83	390
1.82	0.01	4.62	5.51	0.20	ND

Integration Results for MSD1 TIC, MS File

RetTim	Width	Area	Height	Area%	MS (+)
1.33	0.03	608492.56	315331.00	100.00	468

Ret. Time: 1.33

<<<< POSITIVE SPECTRA >>>>

ES-API Positive

