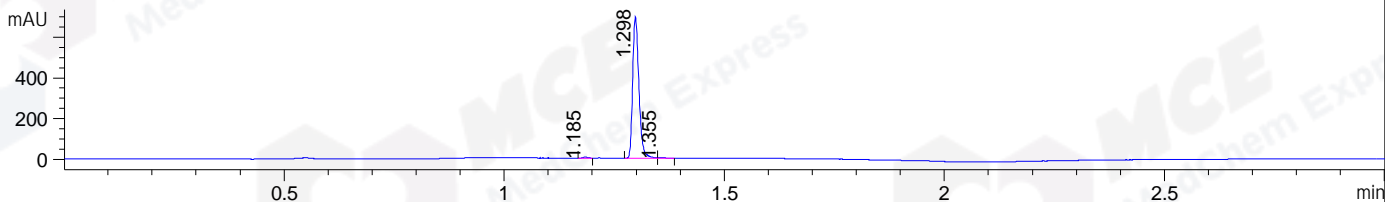
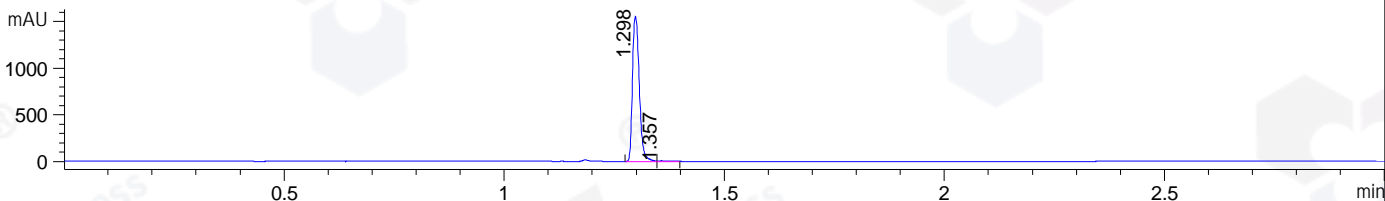


File ..\DATA\2019\20190822\705\CPK2019-822-08852.D Tgt Mass (CHM):
 Injection Date : 22 Aug 19 1:37 pm +0800 Seq. Line : 61
 Sample Name : CPK2019-822-08852 Location : P1-C-03
 Acq. Operator : ZJ_1432 Inj : 1
 Spec. Reported : MS Integration Inj Volume : 1 ul
 Acq. Method : D:\Chem32\1\data\2019\20190822\705\1-POS-3MIN.M
 Analysis Method : D:\CHEM32\1\DATA\2019\20190822\705\1-POS-3MIN.M
 Catalog No : HY-13235 Batch#08852
 Method Info : Mobile Phase: A: water(0.01%TFA) B:ACN(0.01%TFA)
 Gradient: 5% to 95%B within 1.3 min
 Flow Rate :1.8ml/min
 Column :SunFire C18, 4.6*50mm,3.5um A-RP-433
 Oven Temperature : 45□

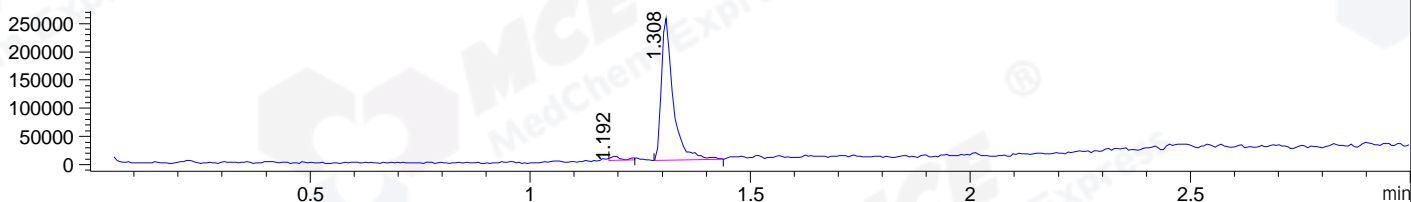
DAD1 B, Sig=214,4 Ref=off



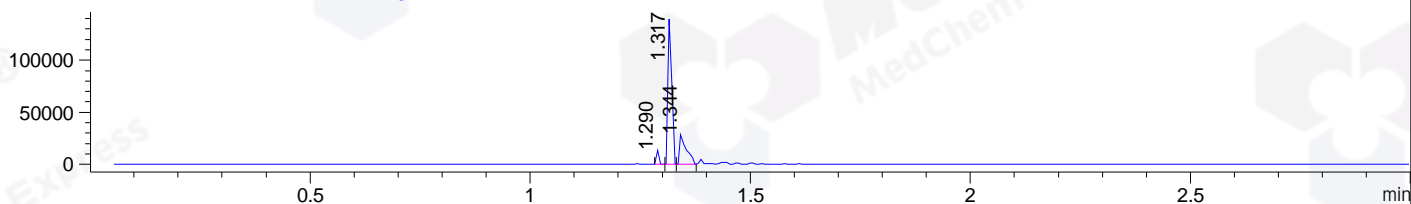
DAD1 C, Sig=254,4 Ref=off



MSD1 TIC, MS File ES-API, Pos, Scan, Frag: 70



Ion 416.4555, MSD1 416.4555, Target Mass 415.4555 +H Positive, EIC=416.16:417.16



Integration Results for DAD1 B, Sig=214,4 Ref=off

RetTim	Width	Area	Height	Area%	MS (+)
1.18	0.01	3.47	4.05	0.51	321
1.30	0.02	679.80	695.57	99.15	416
1.36	0.02	2.36	1.89	0.34	416

Integration Results for DAD1 C, Sig=254,4 Ref=off

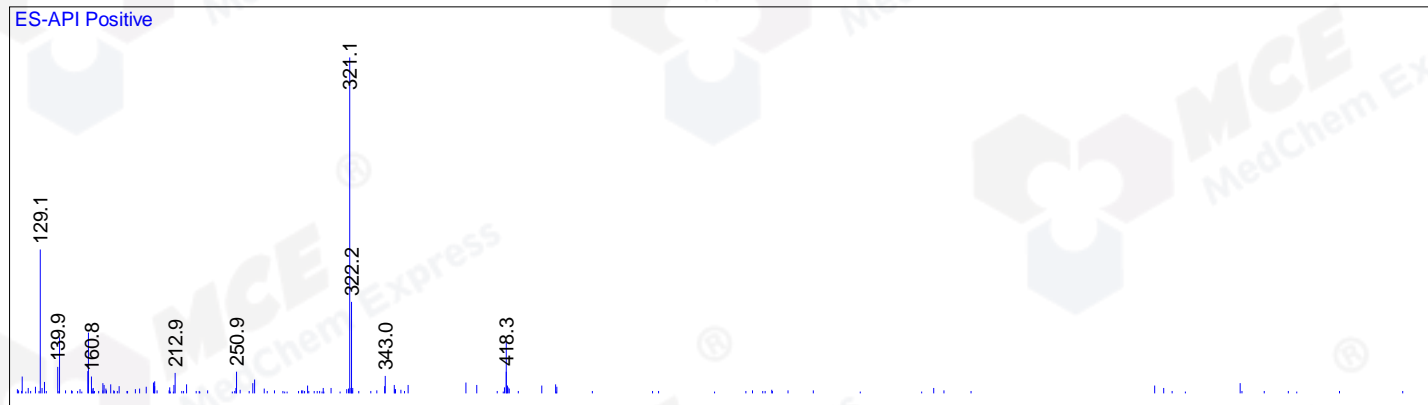
RetTim	Width	Area	Height	Area%	MS (+)
1.30	0.02	1673.98	1556.59	99.37	416
1.36	0.02	10.65	7.54	0.63	416

Integration Results for MSD1 TIC, MS File

RetTim	Width	Area	Height	Area%	MS (+)
1.19	0.03	11069.70	6721.92	2.28	321
1.31	0.03	473798.31	253539.16	97.72	416

Ret. Time: 1.19

<<<< POSITIVE SPECTRA >>>>



Ret. Time: 1.31

