

File ..\DATA\2019\20191016\733\CPK2019-015-13529.D Tgt Mass (CHM):

Injection Date : 16 Oct 19 4:32 pm +0800 Seq. Line : 98

Sample Name : CPK2019-015-13529 Location : P1-A-06

Acq. Operator : ZJ_1432 Inj : 1

Spec. Reported : MS Integration Inj Volume : 1 ul

Acq. Method : D:\Chem32\1\data\2019\20191016\733\1-POS-3MIN.M

Analysis Method : D:\CHEM32\1\DATA\2019\20191016\733\1-POS-3MIN.M

Catalog No : HY-13238A Batch# 13529

Method Info : Mobile Phase: A: water(0.01%TFA) B:ACN(0.01%TFA)

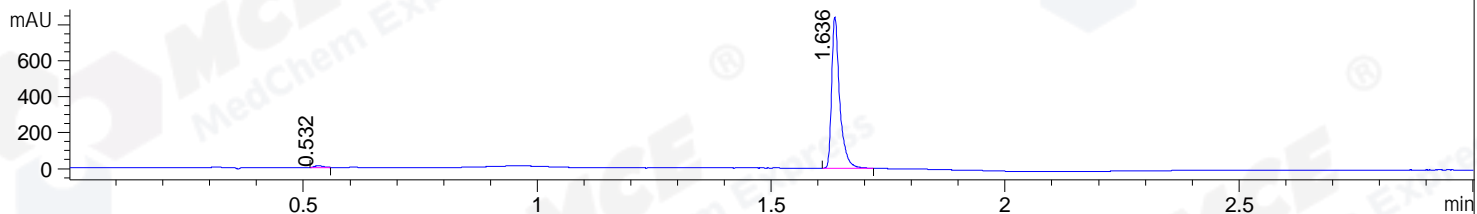
Gradient: 5% to 95%B within 1.3 min

Flow Rate :1.8ml/min

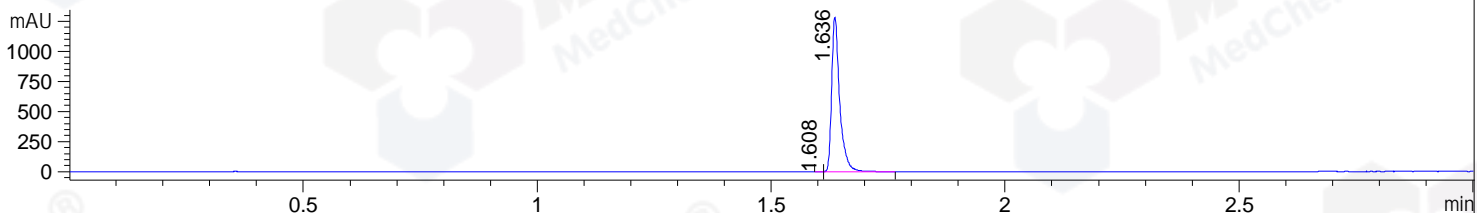
Column :SunFire C18, 4.6*50mm,3.5um A-RP-433

Oven Temperature : 45

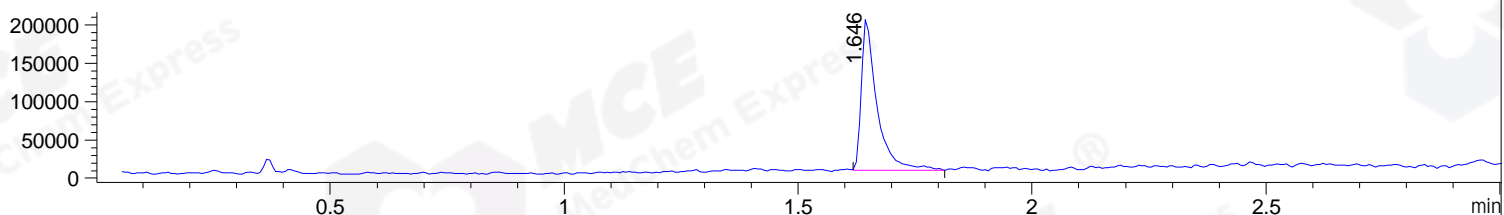
DAD1 B, Sig=214,4 Ref=off



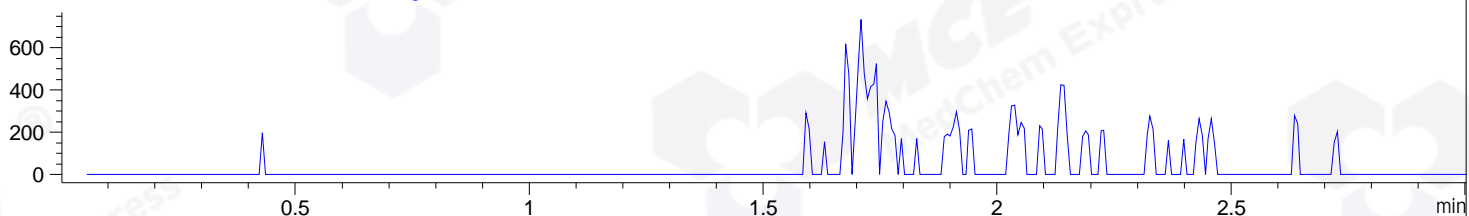
DAD1 C, Sig=254,4 Ref=off



MSD1 TIC, MS File ES-API, Pos, Scan, Frag: 70



Ion 442.11122, MSD1 442.11122, Target Mass 441.11122 +H Positive, EIC=441.81:442.81



Integration Results for DAD1 B, Sig=214,4 Ref=off

RetTim	Width	Area	Height	Area%	MS (+)
0.53	0.02	11.88	9.48	1.17	130
1.64	0.02	999.77	840.86	98.83	420

Integration Results for DAD1 C, Sig=254,4 Ref=off

RetTim	Width	Area	Height	Area%	MS (+)
1.61	0.01	0.68	0.91	0.04	130
1.64	0.02	1533.18	1285.71	99.96	420

Integration Results for MSD1 TIC, MS File

RetTim	Width	Area	Height	Area%	MS (+)
1.65	0.03	459305.50	199145.31	100.00	420

Ret. Time: 1.65

<<<< POSITIVE SPECTRA >>>>

ES-API Positive

