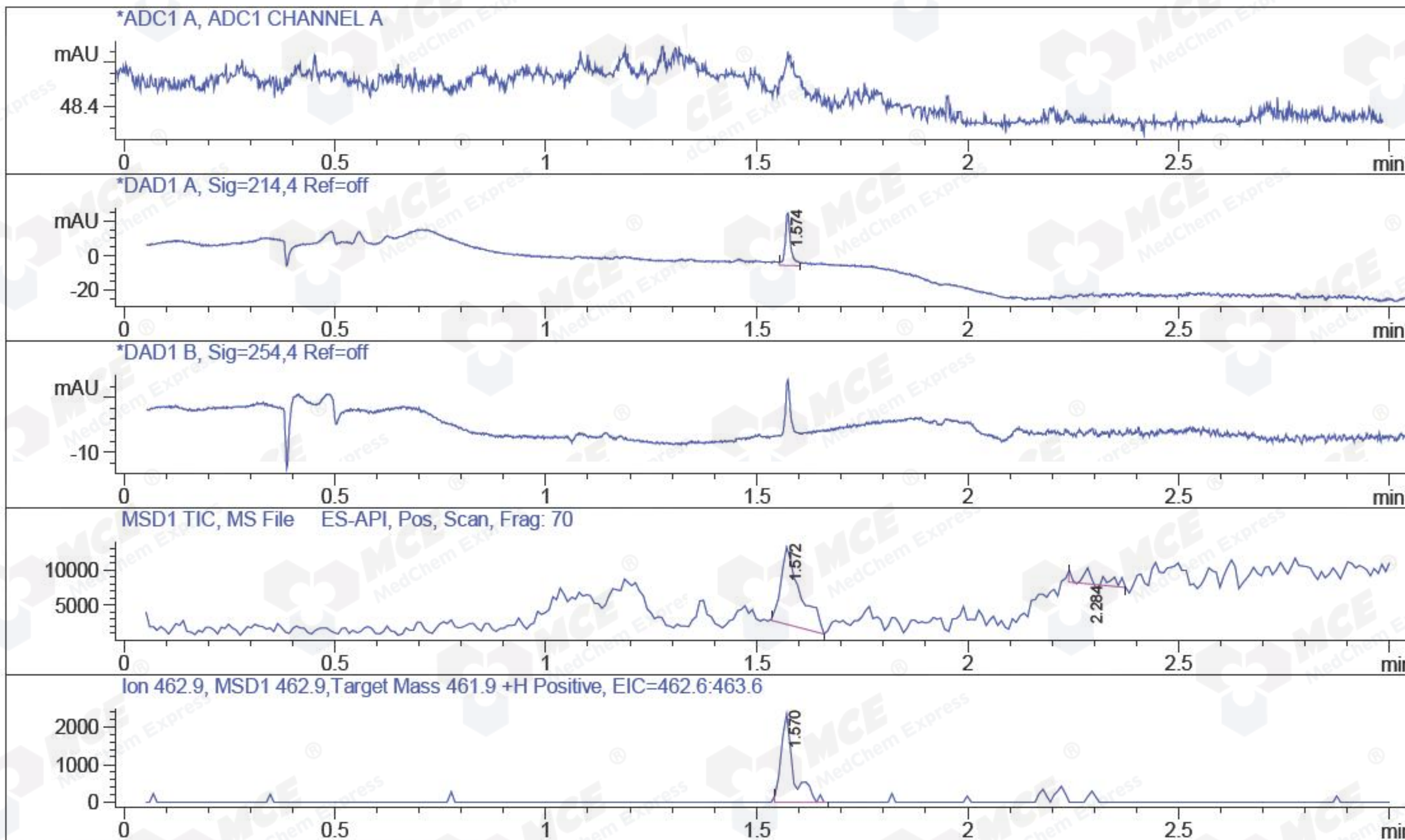


File D:\DATA\A02\MONITOR\CPK2017-705-06022-52504-LCMSA002.D  
 Injection Date : 5 Jul 17 6:51 pm +0800 Tgt Mass (EZX) : 461.90  
 Sample Name : CPK2017-705-06022 Location : P2-D-09  
 Acq. Operator : A02-MONITOR Inj : 1  
 Spec. Reported : MS Integration Inj Volume : 2 ul  
 Acq. Method : D:\METHODS\1-POS-3MIN-MON.M  
 Analysis Method : D:\METHODS\1-POS-3MIN-MON.M  
 Catalog No : HY-13252 Batch#06022 Easy-Access Method: '1-POS-3MIN-MON' 461.90  
 Method Info : Mobile Phase: A: water(0.01%TFA) B:ACN(0.01%TFA)  
 Gradient: 5%B increase to 95%B within 1.6 min,  
 95%B for 1.4min,back to 5%B within 0.01min  
 Flow Rate:2.0ml/min  
 Column :SunFire C18, 4.6\*50mm, 3.5um  
 Oven Temperature : 50C



Integration Results for ADC1 A, ADC1 CHANNEL A

RetTim	Width	Area	Height	Area%
--------	-------	------	--------	-------

Integration Results for DAD1 A, Sig=214,4 Ref=off

RetTim	Width	Area	Height	Area%
1.57	0.02	27.14	25.15	100.00

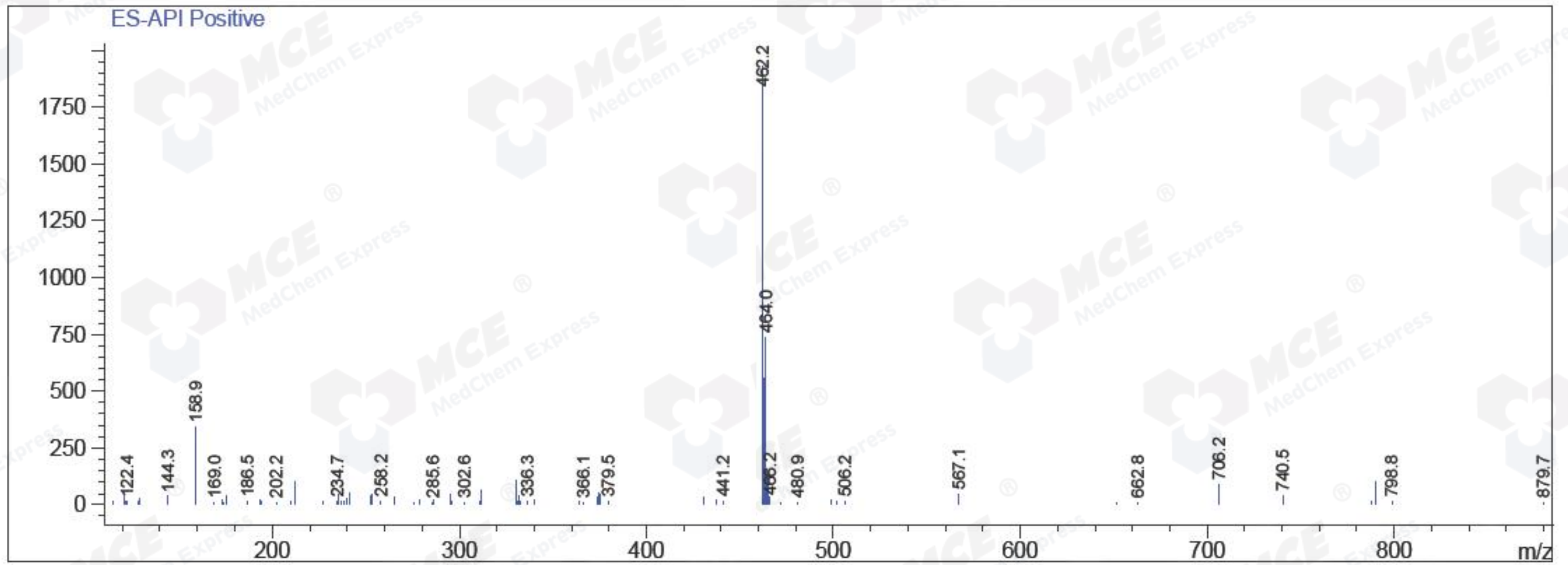
Integration Results for DAD1 B, Sig=254,4 Ref=off

RetTim	Width	Area	Height	Area%
--------	-------	------	--------	-------



Ret. Time: 1.57

<<<< POSITIVE SPECTRA >>>>



Ret. Time: 2.28

