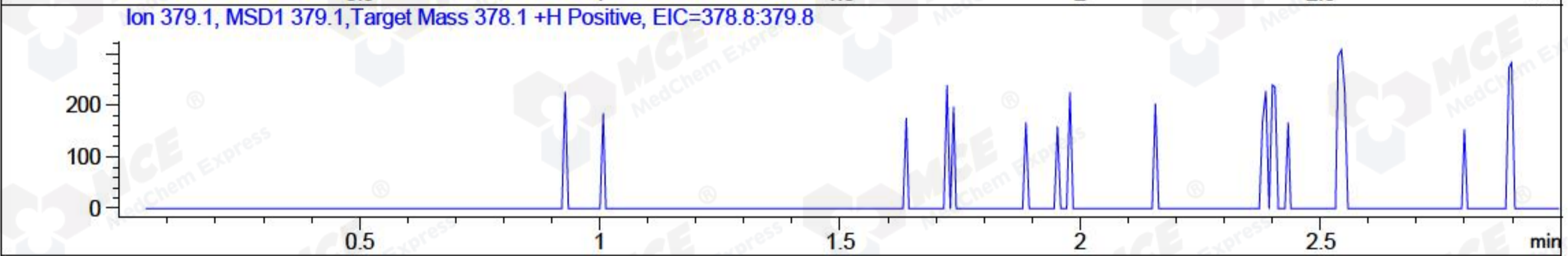
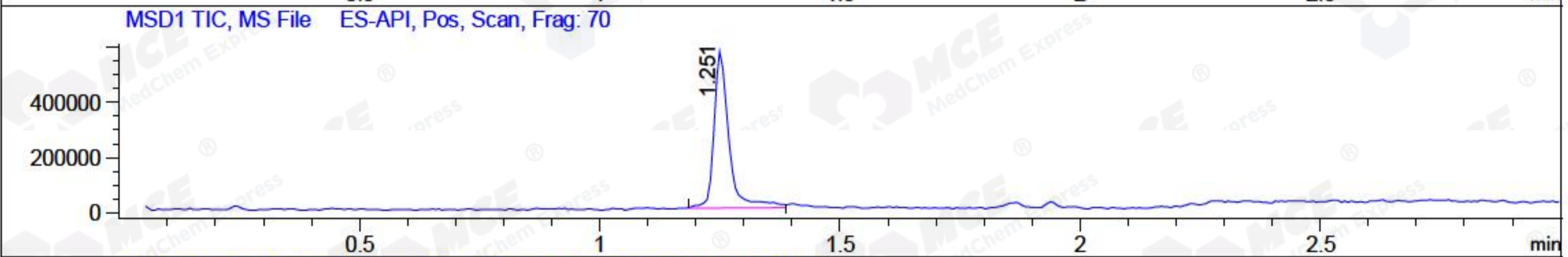
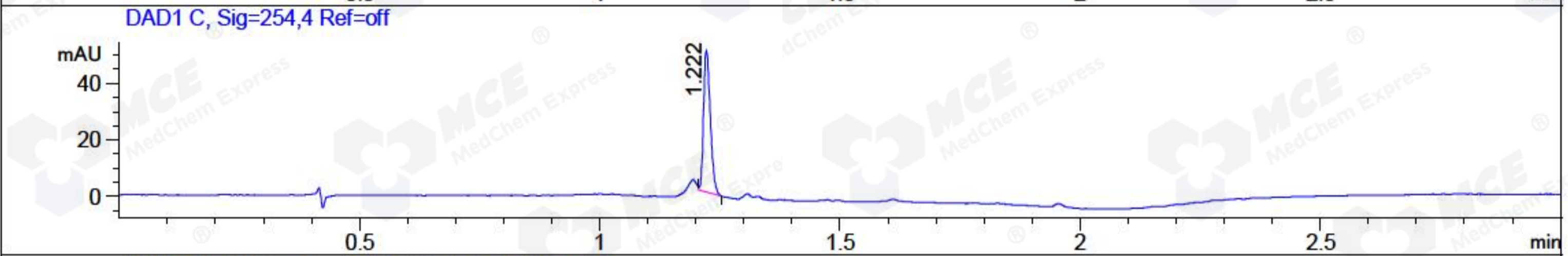
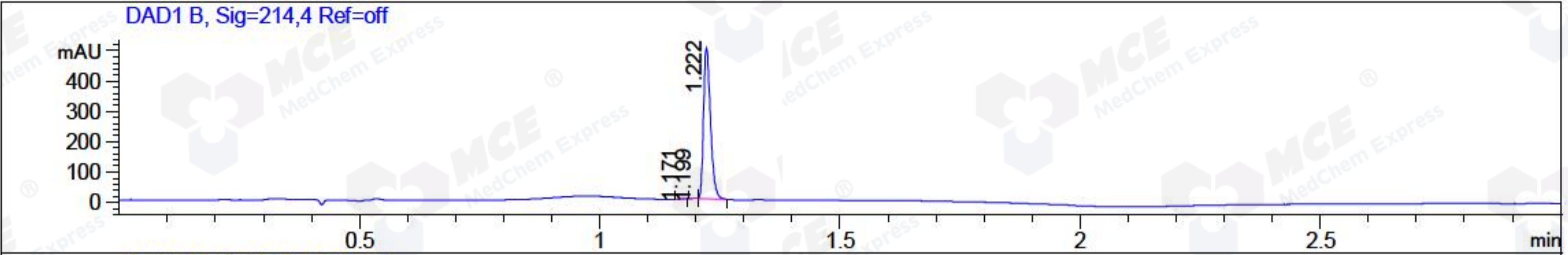


File ..1\DATA\2018\20181023\465\BIZ2018-023-WYQ6.D Tgt Mass (CHM):
 Injection Date : 23 Oct 18 3:40 pm +0800 Seq. Line : 4
 Sample Name : BIZ2018-023-WYQ6 Location : P1-C-05
 Acq. Operator : LQ_1052 Inj : 1
 Spec. Reported : MS Integration Inj Volume : 1 ul
 Acq. Method : D:\Chem32\1\data\2018\20181023\465\1-POS-3MIN-1.M
 Analysis Method : D:\CHEM32\1\DATA\2018\20181023\465\1-POS-3MIN-1.M
 Catalog No : HY-13255A Batch#33632 A-RP-314
 Method Info : Mobile Phase: A: water(0.01%TFA) B:ACN(0.01%TFA)
 Gradient: 5% to 95%B within 1.3 min
 Flow Rate :1.8ml/min
 Column :SunFire C18, 4.6*50mm,3.5um A-RP-314
 Oven Temperature : 45□



Integration Results for DAD1 B, Sig=214,4 Ref=off

RetTim	Width	Area	Height	Area%	MS (+)
1.17	0.01	1.72	2.46	0.34	324
1.20	0.01	2.85	3.90	0.56	329
1.22	0.02	501.16	500.96	99.10	343

Integration Results for DAD1 C, Sig=254,4 Ref=off

RetTim	Width	Area	Height	Area%	MS (+)
1.22	0.01	48.81	50.26	100.00	343

Integration Results for MSD1 TIC, MS File

RetTim	Width	Area	Height	Area%	MS (+)
1.25	0.03	1252555.25	570315.06	100.00	343

Ret. Time: 1.25

<<<< POSITIVE SPECTRA >>>>

ES-API Positive

343.2
343.1

