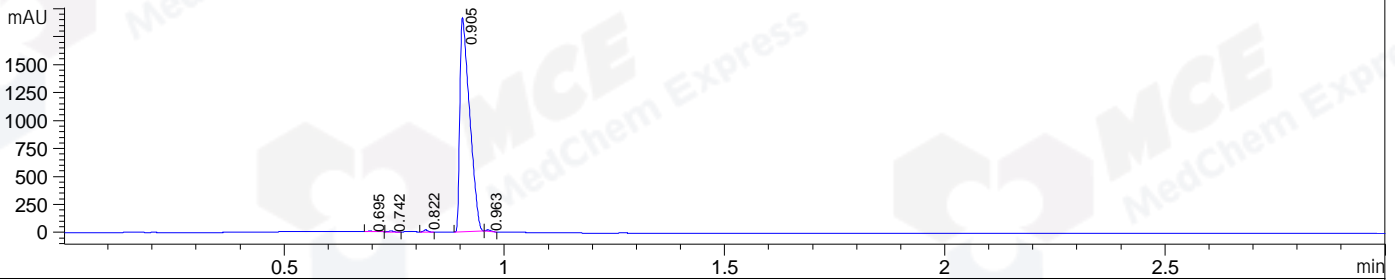
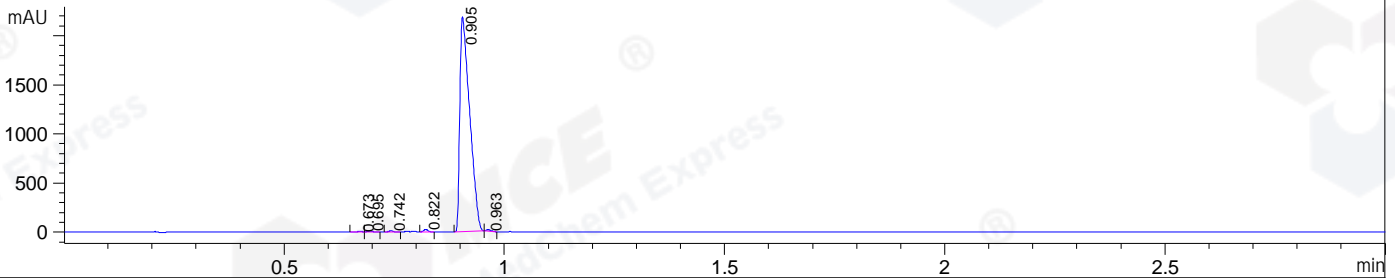


File E:\ChemStation\1\DATA\2023\2023-07\2023-07-05\CPK2023-630-15617-UPLC-MS-10-007148.D
 Injection Date : 05-Jul-23, 11:06:28 Tgt Mass(EZX) :
 Sample Name : CPK2023-630-15617 Location : P1-C-02
 Acq. Operator : LY_2278 Inj : 1
 Spec. Reported : MS Integration Inj Volume : 1 ul
 Acq. Method : E:\ChemStation\1\Methods\1-POS-UPLC3.0MIN(1.2)(150-2000)-polar.M
 Analysis Method : E:\CHEMSTATION\1\METHODS\1-POS-UPLC3.0MIN(1.2)(150-2000)-polar.M
 CAS NO. : 244218-51-7 WalkUp method: '1-POS-3MIN-polar' Project: CPK2023
 Method Info : Mobile Phase: A: water(0.01%TFA) B:ACN(0.01%TFA)
 Gradient: 5% to 95%B within 0.8 min
 Flow Rate :1.2ml/min
 Column :Shim-pack Scepter C18-120, 3.0*33mm,3um
 Oven Temperature : 45C

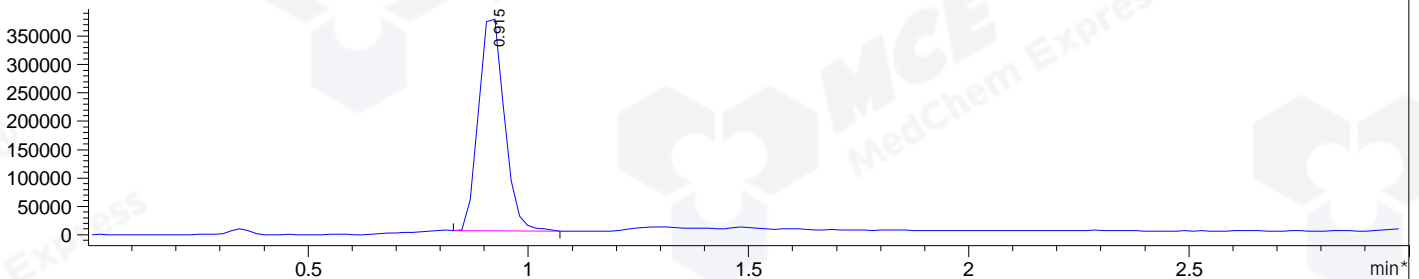
DAD1 A, Sig=214,4 Ref=off



DAD1 B, Sig=254,4 Ref=off



*MSD1 TIC, MS File ES-API, Pos, Scan, Frag: 70



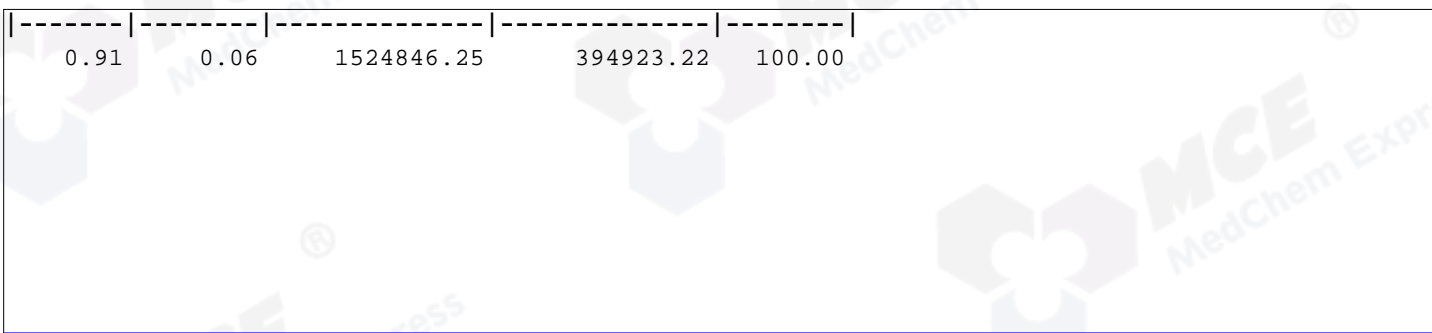
Integration Results for DAD1 A, Sig=214,4 Ref=off

RetTim	Width	Area	Height	Area%
0.70	0.01	4.53	6.81	0.15
0.74	0.01	5.22	8.31	0.17
0.82	0.01	12.58	18.96	0.42
0.91	0.02	2953.44	1914.87	98.91
0.96	0.01	10.11	13.05	0.34

Integration Results for DAD1 B, Sig=254,4 Ref=off

RetTim	Width	Area	Height	Area%
0.67	0.01	1.84	2.80	0.05
0.70	0.01	5.20	7.96	0.15
0.74	0.01	7.05	11.25	0.21
0.82	0.01	16.70	25.36	0.49
0.91	0.02	3383.12	2186.12	98.80
0.96	0.01	10.46	13.94	0.31

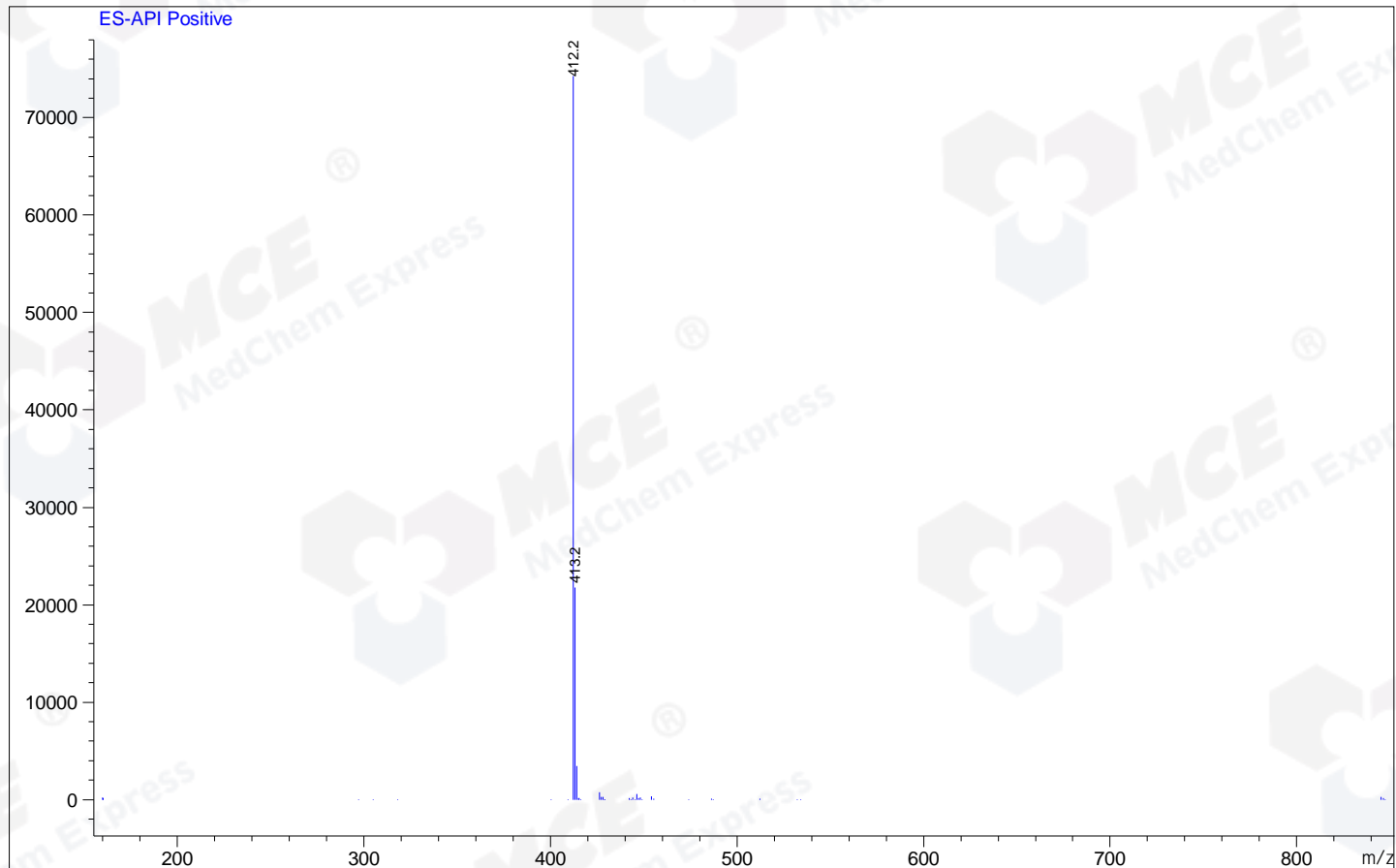
Integration Results for MSD1 TIC, MS File



RetTim	Width	Area	Height	Area%
--------	-------	------	--------	-------

Ret. Time: 0.91

<<<< POSITIVE SPECTRA >>>>



*** End of Report ***