

File ..8-3 2018-01-18 13-43-42\CPK2018-117-15160.D Tgt Mass (CHM):

Injection Date : 18 Jan 18 3:48 pm +0800 Seq. Line : 26

Sample Name : CPK2018-117-15160 Location : P2-B-05

Acq. Operator : HCL_771 Inj : 1

Spec. Reported : MS Integration Inj Volume : 1 ul

Acq. Method : D:\chem32\1\DATA\20180118\20180118-3 2018-01-18 13-43-42\1-POS-3MIN-1.M

Analysis Method : D:\CHEM32\1\DATA\20180118\20180118-3 2018-01-18 13-43-42\1-POS-3MIN-1.M

Catalog No : HY-13274 Batch#15160 A-RP-189

Method Info : Mobile Phase: A: water(0.01%TFA) B:ACN(0.01%TFA)

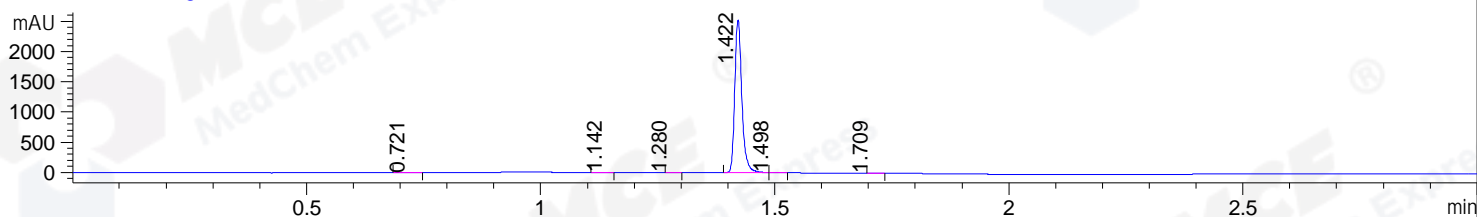
Gradient: 5% to 95%B within 1.3 min

Flow Rate :1.8ml/min

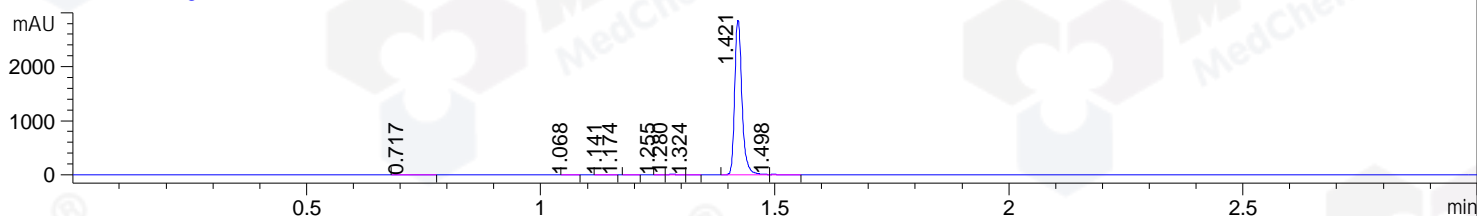
Column :SunFire C18, 4.6*50mm,3.5um A-RP-186

Oven Temperature : 45C

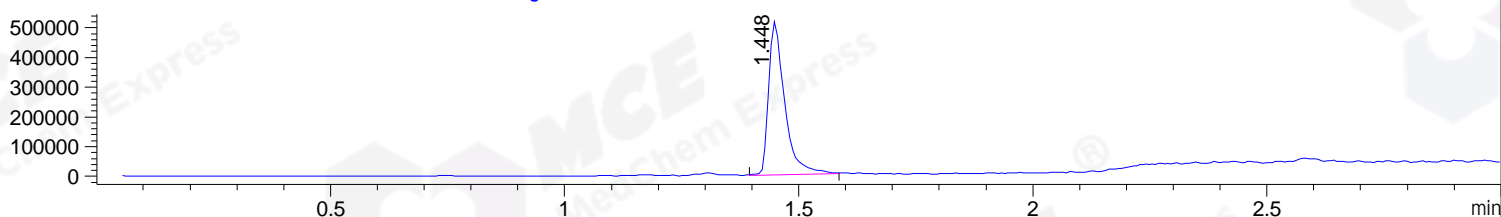
DAD1 B, Sig=214,4 Ref=off



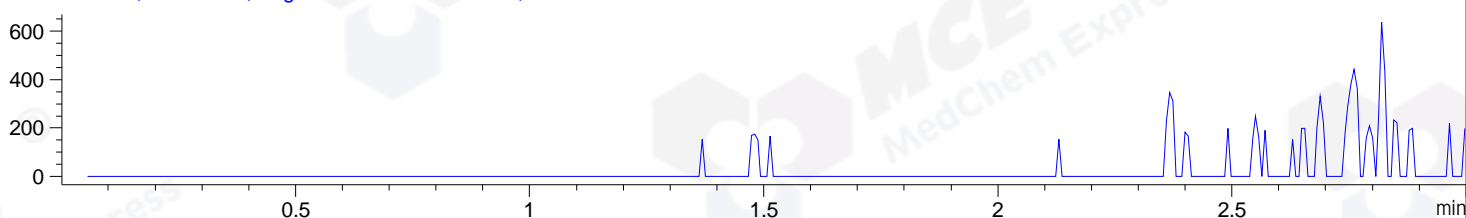
DAD1 C, Sig=254,4 Ref=off



MSD1 TIC, MS File ES-API, Pos, Scan, Frag: 70



Ion 449, MSD1 449, Target Mass 448 +H Positive, EIC=448.7:449.7



Integration Results for DAD1 B, Sig=214,4 Ref=off

RetTim	Width	Area	Height	Area%	MS (+)
0.72	0.06	2.74	1.35	0.10	ND
1.14	0.03	4.79	4.04	0.18	ND
1.28	0.02	6.09	6.79	0.23	428
1.42	0.02	2677.21	2532.26	99.20	412
1.50	0.02	6.49	5.05	0.24	412
1.71	0.04	1.48	1.12	0.05	412

Integration Results for DAD1 C, Sig=254,4 Ref=off

RetTim	Width	Area	Height	Area%	MS (+)
0.72	0.04	5.85	2.49	0.19	ND
1.07	0.03	1.26	0.89	0.04	ND
1.14	0.03	7.06	4.75	0.23	ND
1.17	0.02	1.63	0.18	0.05	306
1.26	0.01	1.89	2.34	0.06	ND
1.28	0.02	11.59	11.25	0.37	426
1.32	0.02	1.24	1.18	0.04	426
1.42	0.02	3092.66	2863.83	98.73	412

1.50 0.03 9.26 6.35 0.30 412

Integration Results for MSD1 TIC, MS File

RetTim	Width	Area	Height	Area%	MS (+)
1.45	0.03	1224651.50	515989.28	100.00	412

Ret. Time: 1.45

<<<< POSITIVE SPECTRA >>>>

