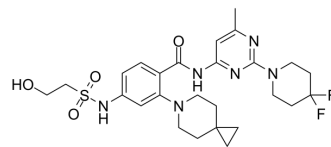


Sovilnesib

Cat. No.:	HY-132840
CAS No.:	2410796-79-9
Molecular Formula:	C ₂₆ H ₃₄ F ₂ N ₆ O ₄ S
Molecular Weight:	564.65
Target:	Microtubule/Tubulin
Pathway:	Cell Cycle/DNA Damage; Cytoskeleton
Storage:	Please store the product under the recommended conditions in the Certificate of Analysis.



BIOLOGICAL ACTIVITY

Description	Sovilnesib is a kinesin-like protein KIF18A inhibitor (WO2020132648). Sovilnesib can be used for the research of cancer ^[1] .
IC ₅₀ & Target	KIF18A ^[1]
In Vitro	Sovilnesib is a kinesin-like protein KIF18A inhibitor ^[1] . MCE has not independently confirmed the accuracy of these methods. They are for reference only.

REFERENCES

[1]. WO2020132648

Caution: Product has not been fully validated for medical applications. For research use only.

Tel: 609-228-6898

Fax: 609-228-5909

E-mail: tech@MedChemExpress.com

Address: 1 Deer Park Dr, Suite Q, Monmouth Junction, NJ 08852, USA