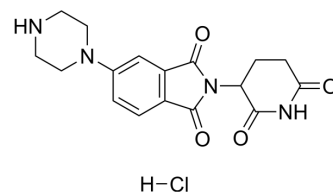


Thalidomide-piperazine hydrochloride

Cat. No.:	HY-132971
CAS No.:	2228029-82-9
Molecular Formula:	C ₁₇ H ₁₉ ClN ₄ O ₄
Molecular Weight:	378.81
Target:	Others
Pathway:	Others
Storage:	4°C, sealed storage, away from moisture * In solvent : -80°C, 6 months; -20°C, 1 month (sealed storage, away from moisture)



SOLVENT & SOLUBILITY

In Vitro

H₂O : 33.33 mg/mL (87.99 mM; Need ultrasonic)

Preparing Stock Solutions	Solvent Concentration	Mass		
		1 mg	5 mg	10 mg
	1 mM	2.6398 mL	13.1992 mL	26.3985 mL
	5 mM	0.5280 mL	2.6398 mL	5.2797 mL
	10 mM	0.2640 mL	1.3199 mL	2.6398 mL

Please refer to the solubility information to select the appropriate solvent.

BIOLOGICAL ACTIVITY

Description

Thalidomide-piperazine hydrochloride has the potential for the research of leprosy and multiple myeloma. Thalidomide-piperazine hydrochloride used as a tool in developmental biology leads to important discoveries in the biochemical pathways of limb development^[1].

REFERENCES

[1]. Kim JH, et al. Thalidomide: the tragedy of birth defects and the effective treatment of disease [published correction appears in Toxicol Sci. 2012 Feb;125(2):613]. Toxicol Sci. 2011;122(1):1-6.

Caution: Product has not been fully validated for medical applications. For research use only.

Tel: 609-228-6898

Fax: 609-228-5909

E-mail: tech@MedChemExpress.com

Address: 1 Deer Park Dr, Suite Q, Monmouth Junction, NJ 08852, USA