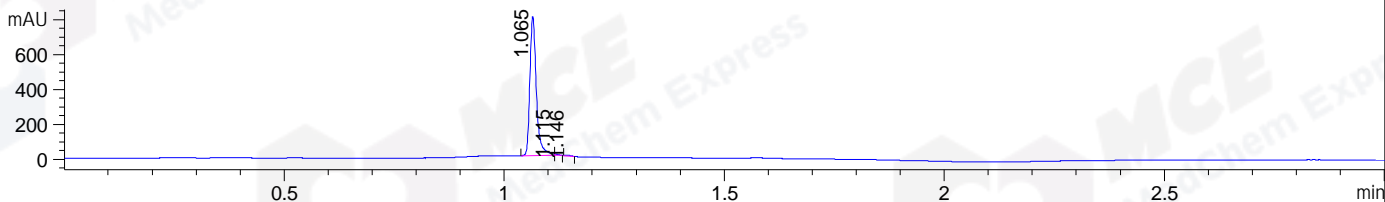
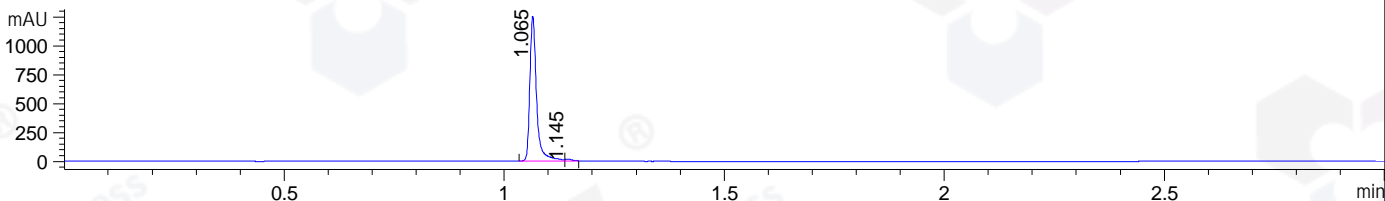


File ..\DATA\2019\20190318\556\CPK2019-315-05177.D Tgt Mass (CHM):
 Injection Date : 18 Mar 19 12:59 pm +0800 Seq. Line : 41
 Sample Name : CPK2019-315-05177 Location : P2-E-08
 Acq. Operator : LQ_1052 Inj : 1
 Spec. Reported : MS Integration Inj Volume : 1 ul
 Acq. Method : D:\Chem32\1\data\2019\20190318\556\1-POS-3MIN-1.M
 Analysis Method : D:\CHEM32\1\DATA\2019\20190318\556\1-POS-3MIN-1.M
 Catalog No : HY-13322 Batch#05177
 Method Info : Mobile Phase: A: water(0.01%TFA) B:ACN(0.01%TFA)
 Gradient: 5% to 95%B within 1.3 min
 Flow Rate :1.8ml/min
 Column :SunFire C18, 4.6*50mm,3.5um A-RP-314
 Oven Temperature : 45□

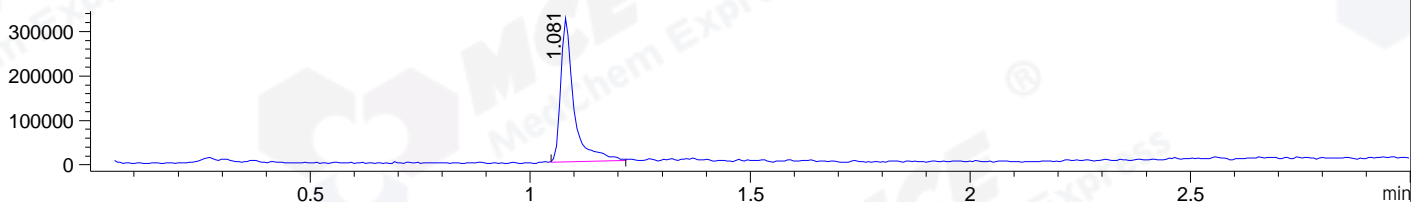
DAD1 B, Sig=214,4 Ref=off



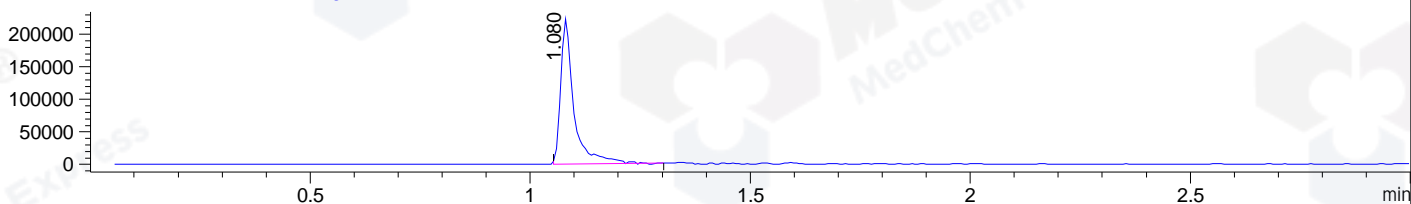
DAD1 C, Sig=254,4 Ref=off



MSD1 TIC, MS File ES-API, Pos, Scan, Frag: 70



Ion 359.5, MSD1 359.5, Target Mass 358.5 +H Positive, EIC=359.2:360.2



Integration Results for DAD1 B, Sig=214,4 Ref=off

RetTim	Width	Area	Height	Area%	MS (+)
1.06	0.02	825.42	800.24	99.07	359
1.12	0.01	4.43	7.99	0.53	359
1.15	0.01	3.29	4.12	0.40	359

Integration Results for DAD1 C, Sig=254,4 Ref=off

RetTim	Width	Area	Height	Area%	MS (+)
1.06	0.02	1336.99	1255.63	98.89	359
1.14	0.02	15.06	14.83	1.11	359

Integration Results for MSD1 TIC, MS File

RetTim	Width	Area	Height	Area%	MS (+)
1.08	0.03	681553.75	324775.19	100.00	359

Ret. Time: 1.08

<<<< POSITIVE SPECTRA >>>>

ES-API Positive

