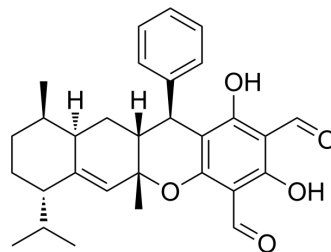


Guajadial E

Cat. No.:	HY-133220
CAS No.:	1529775-06-1
Molecular Formula:	C ₃₀ H ₃₄ O ₅
Molecular Weight:	474.59
Target:	Others
Pathway:	Others
Storage:	Please store the product under the recommended conditions in the Certificate of Analysis.



BIOLOGICAL ACTIVITY

Description	Guajadial E is a natural product that can be found in <i>Psidium guajava</i> . Guajadial E shows cytotoxicity ^[1] .								
In Vitro	<p>Guajadial E (compound 3) (0–40 μM; 48 h) shows cytotoxicity with IC₅₀s of 7.78, 6.30, 5.59, 13.39, 7.77 μM for MCF-7, A-549, SMMC-7721, SW480, HL-60 cells, respectively^[1].</p> <p>MCE has not independently confirmed the accuracy of these methods. They are for reference only.</p> <p>Cell Cytotoxicity Assay^[1]</p> <table border="1"> <tr> <td>Cell Line:</td> <td>MCF-7, A-549, SMMC-7721, SW480, HL-60 cells</td> </tr> <tr> <td>Concentration:</td> <td>0–40 μM</td> </tr> <tr> <td>Incubation Time:</td> <td>48 h</td> </tr> <tr> <td>Result:</td> <td>Showed cytotoxicity with IC₅₀s of 7.78, 6.30, 5.59, 13.39, 7.77 μM for MCF-7, A-549, SMMC-7721, SW480, HL-60 cells, respectively.</td> </tr> </table>	Cell Line:	MCF-7, A-549, SMMC-7721, SW480, HL-60 cells	Concentration:	0–40 μM	Incubation Time:	48 h	Result:	Showed cytotoxicity with IC ₅₀ s of 7.78, 6.30, 5.59, 13.39, 7.77 μM for MCF-7, A-549, SMMC-7721, SW480, HL-60 cells, respectively.
Cell Line:	MCF-7, A-549, SMMC-7721, SW480, HL-60 cells								
Concentration:	0–40 μM								
Incubation Time:	48 h								
Result:	Showed cytotoxicity with IC ₅₀ s of 7.78, 6.30, 5.59, 13.39, 7.77 μM for MCF-7, A-549, SMMC-7721, SW480, HL-60 cells, respectively.								

REFERENCES

[1]. Gao Y, et al. Guajadials C-F, four unusual meroterpenoids from *Psidium guajava*. *Nat Prod Bioprospect*. 2013 Feb 5;3(1):14-9.

Caution: Product has not been fully validated for medical applications. For research use only.

Tel: 609-228-6898

Fax: 609-228-5909

E-mail: tech@MedChemExpress.com

Address: 1 Deer Park Dr, Suite Q, Monmouth Junction, NJ 08852, USA