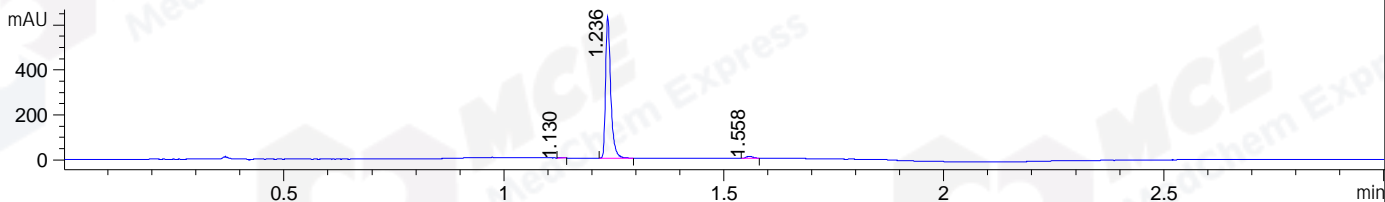
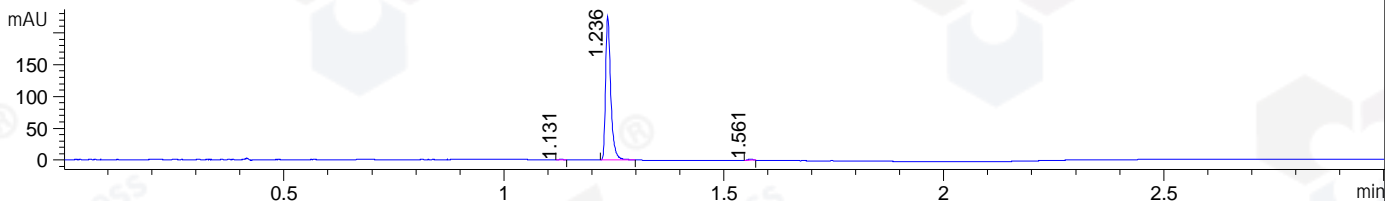


File ..\DATA\2020\20200507\948\BIZ2020-430-CXL2.D Tgt Mass (CHM):  
 Injection Date : 7 May 20 12:23 pm +0800 Seq. Line : 14  
 Sample Name : BIZ2020-430-CXL2 Location : P1-D-04  
 Acq. Operator : ZJ\_1432 Inj : 1  
 Spec. Reported : MS Integration Inj Volume : 0.3 ul  
 Acq. Method : D:\Chem32\1\data\2020\20200507\948\1-POS-3MIN.M  
 Analysis Method : D:\CHEM32\1\DATA\2020\20200507\948\1-POS-3MIN.M  
 Catalog No : HY-13335  
 Method Info : Mobile Phase: A: water(0.01%TFA) B:ACN(0.01%TFA)  
 Gradient: 5% to 95%B within 1.3 min  
 Flow Rate :1.8ml/min  
 Column :SunFire C18, 4.6\*50mm,3.5um A-RP-607  
 Oven Temperature : 45

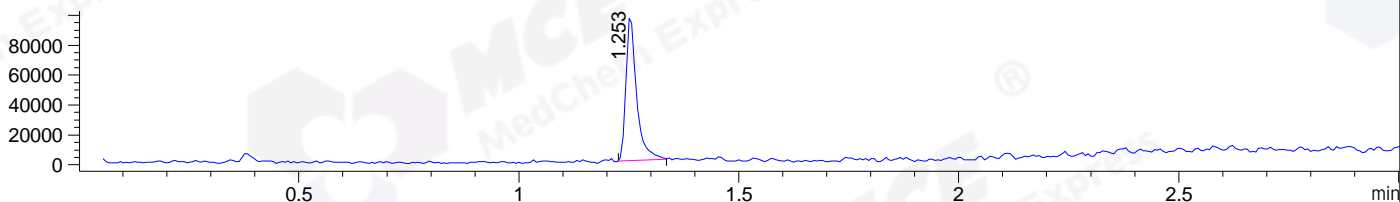
DAD1 B, Sig=214,4 Ref=off



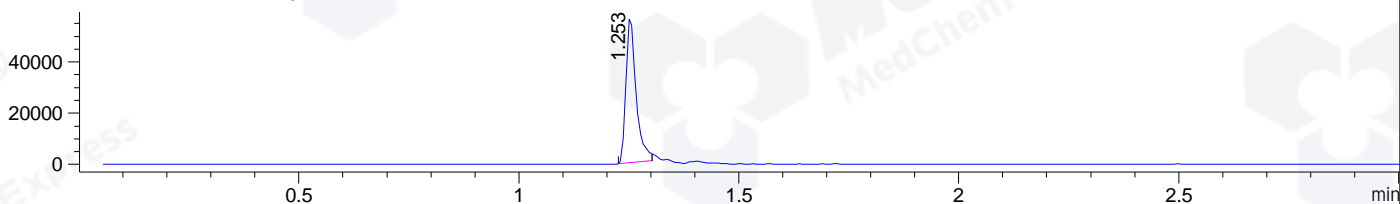
DAD1 C, Sig=254,4 Ref=off



MSD1 TIC, MS File ES-API, Pos, Scan, Frag: 70



Ion 412, MSD1 412, Target Mass 411 +H Positive, EIC=411.7:412.7



Integration Results for DAD1 B, Sig=214,4 Ref=off

RetTim	Width	Area	Height	Area%	MS (+)
1.13	0.01	1.49	2.23	0.29	ND
1.24	0.01	509.95	632.36	98.21	412
1.56	0.02	7.79	8.56	1.50	ND

Integration Results for DAD1 C, Sig=254,4 Ref=off

RetTim	Width	Area	Height	Area%	MS (+)
1.13	0.01	0.63	0.87	0.34	ND
1.24	0.01	182.99	226.61	99.10	412
1.56	0.01	1.04	1.66	0.56	ND

Integration Results for MSD1 TIC, MS File

RetTim	Width	Area	Height	Area%	MS (+)
1.25	0.03	164875.28	98911.45	100.00	412

Ret. Time: 1.25

<<<< POSITIVE SPECTRA >>>>

ES-API Positive

