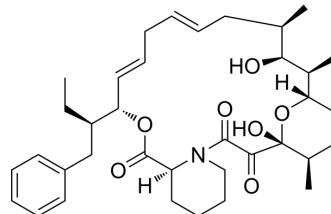


## WDB002

Cat. No.:	HY-133516
CAS No.:	2225847-99-2
Molecular Formula:	C <sub>36</sub> H <sub>51</sub> NO <sub>7</sub>
Molecular Weight:	609.79
Target:	Others
Pathway:	Others
Storage:	Please store the product under the recommended conditions in the Certificate of Analysis.



### BIOLOGICAL ACTIVITY

#### Description

WDB002, a natural product, is a member of the FK506/rapamycin family. WDB002 can target CEP250. WDB002 can be used for the research of COVID-19<sup>[1]</sup>.

### REFERENCES

[1]. Shigdel UK, et al. Genomic discovery of an evolutionarily programmed modality for small-molecule targeting of an intractable protein surface. Proc Natl Acad Sci U S A. 2020 Jul 21;117(29):17195-17203.

**Caution: Product has not been fully validated for medical applications. For research use only.**

Tel: 609-228-6898

Fax: 609-228-5909

E-mail: tech@MedChemExpress.com

Address: 1 Deer Park Dr, Suite Q, Monmouth Junction, NJ 08852, USA