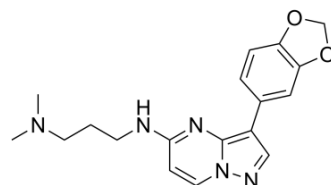


## RET-IN-3

Cat. No.:	HY-133553		
CAS No.:	2414374-53-9		
Molecular Formula:	C <sub>18</sub> H <sub>21</sub> N <sub>5</sub> O <sub>2</sub>		
Molecular Weight:	339.39		
Target:	RET		
Pathway:	Protein Tyrosine Kinase/RTK		
Storage:	Powder	-20°C	3 years
		4°C	2 years
	In solvent	-80°C	6 months
		-20°C	1 month



## BIOLOGICAL ACTIVITY

Description	RET-IN-3 (compound 34) is a selective RETV804M kinase inhibitor, with an IC <sub>50</sub> of 19 nM <sup>[1]</sup> .
IC <sub>50</sub> & Target	IC <sub>50</sub> : 19 nM (RETV804M) <sup>[1]</sup> .
In Vitro	RET-IN-3 exhibits 16 and 410 fold selectivity compared to wt-RET and KDR, respectively <sup>[1]</sup> . MCE has not independently confirmed the accuracy of these methods. They are for reference only.

## REFERENCES

[1]. Rebecca Newton, et al. Discovery and Optimization of wt-RET/KDR-Selective Inhibitors of RET V804M Kinase. ACS Med Chem Lett. 2020 Feb 28;11(4):497-505.

**Caution: Product has not been fully validated for medical applications. For research use only.**

Tel: 609-228-6898

Fax: 609-228-5909

E-mail: tech@MedChemExpress.com

Address: 1 Deer Park Dr, Suite Q, Monmouth Junction, NJ 08852, USA