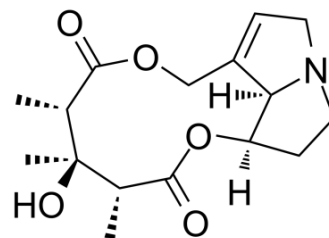


Fulvine

Cat. No.:	HY-133589
CAS No.:	6029-87-4
Molecular Formula:	C ₁₆ H ₂₃ NO ₅
Molecular Weight:	309.36
Target:	Others
Pathway:	Others
Storage:	Please store the product under the recommended conditions in the Certificate of Analysis.



BIOLOGICAL ACTIVITY

Description

Fulvine is a pyrrolizidine alkaloid isolated from the seeds of *Crotalaria fulva*. Fulvine is hepatotoxic and can be used to induce hypertensive pulmonary vascular disease in vivo^[1].

REFERENCES

[1]. J M Kay, et al. Fulvine and the pulmonary circulation. *Thorax*

Caution: Product has not been fully validated for medical applications. For research use only.

Tel: 609-228-6898

Fax: 609-228-5909

E-mail: tech@MedChemExpress.com

Address: 1 Deer Park Dr, Suite Q, Monmouth Junction, NJ 08852, USA