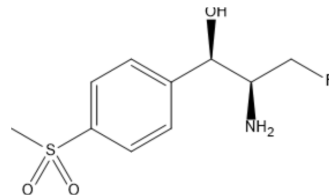


## Florfenicol amine

Cat. No.:	HY-133695
CAS No.:	76639-93-5
Molecular Formula:	C <sub>10</sub> H <sub>14</sub> FNO <sub>3</sub> S
Molecular Weight:	247.29
Target:	Drug Metabolite
Pathway:	Metabolic Enzyme/Protease
Storage:	Please store the product under the recommended conditions in the Certificate of Analysis.



### BIOLOGICAL ACTIVITY

#### Description

Florfenicol amine is a metabolite of Florfenicol (HY-B1374). Florfenicol, a veterinary antibiotic, can be used in aquaculture to control susceptible bacterial diseases<sup>[1]</sup>.

### REFERENCES

[1]. B-K Park, et al. Pharmacokinetics of florfenicol and its metabolite, florfenicol amine, in the Korean catfish (*Silurus asotus*). *J Vet Pharmacol Ther.* 2006 Feb;29(1):37-40.

**Caution: Product has not been fully validated for medical applications. For research use only.**

Tel: 609-228-6898

Fax: 609-228-5909

E-mail: tech@MedChemExpress.com

Address: 1 Deer Park Dr, Suite Q, Monmouth Junction, NJ 08852, USA