

File ..0200923 2020-09-23 08-35-47\FSD8211-012-3.D Tgt Mass (CHM):

Injection Date : 23 Sep 20 1:22 pm +0800 Seq. Line : 67

Sample Name : FSD8211-012-3 Location : P1-F-04

Acq. Operator : SYSTEM Inj : 1

Spec. Reported : MS Integration Inj Volume : 0.2 ul

Acq. Method : D:\LCMS03\Data\20200923\20200923 2020-09-23 08-35-47\1-POS-UPLC2.0MIN(0.8ML)

Analysis Method : D:\LCMS03\Data\20200923\20200923 2020-09-23 08-35-47\1-POS-UPLC2.0MIN(0.8ML) -

CAS NO. : 2225940-51-0

Method Info : Mobile Phase: A: water(0.01%TFA) B:ACN(0.01%TFA)

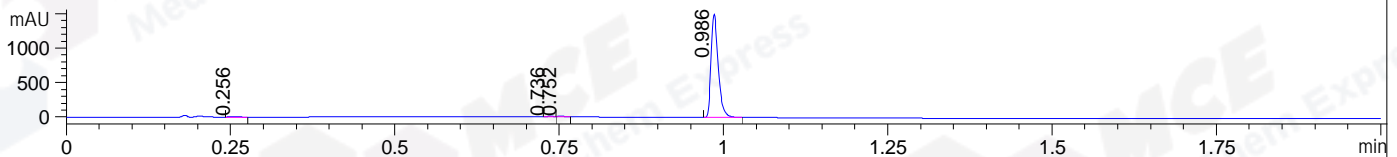
Gradient: 5% to 95%B within 0.6 min

Flow Rate : 0.8ml/min

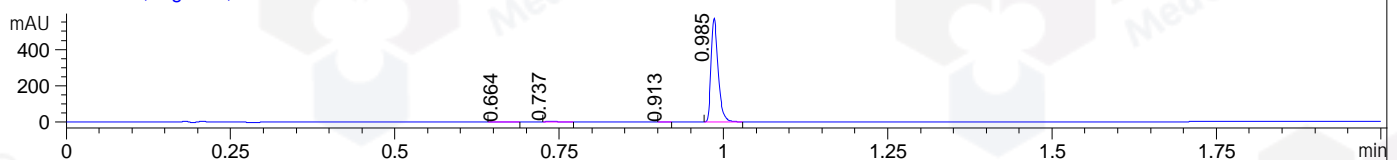
Column : Poroshell 120 EC- C18, 2.1\*50mm,1.9um A-RP-530

Oven Temperature : 45C

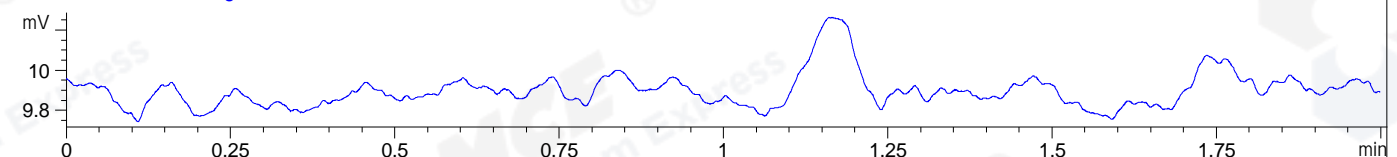
DAD1 A, Sig=214,4 Ref=off



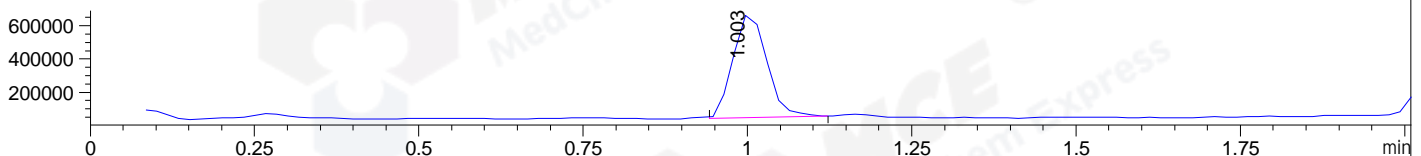
DAD1 B, Sig=254,4 Ref=off



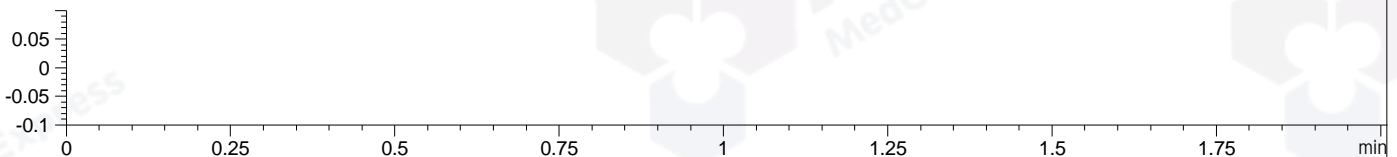
ELS1 A, ELSD Signal



MSD1 TIC, MS File ES-API, Pos, Scan, Frag: 70



Ion 1, MSD1 1, Target Mass 0 +H Positive, EIC=0.7:1.7



## Integration Results for DAD1 A, Sig=214,4 Ref=off

RetTim	Width	Area	Height	Area%	MS (+)
0.26	0.01	7.28	8.46	0.63	199
0.74	0.01	6.93	9.96	0.60	161
0.75	0.01	8.46	11.81	0.73	161
0.99	0.01	1134.28	1501.76	98.04	416

## Integration Results for DAD1 B, Sig=254,4 Ref=off

RetTim	Width	Area	Height	Area%	MS (+)
0.66	0.02	0.26	0.21	0.06	161
0.74	0.01	3.12	3.91	0.72	161
0.91	0.01	0.66	0.82	0.15	161
0.99	0.01	426.42	572.80	99.06	416

## Integration Results for ELS1 A, ELSD Signal

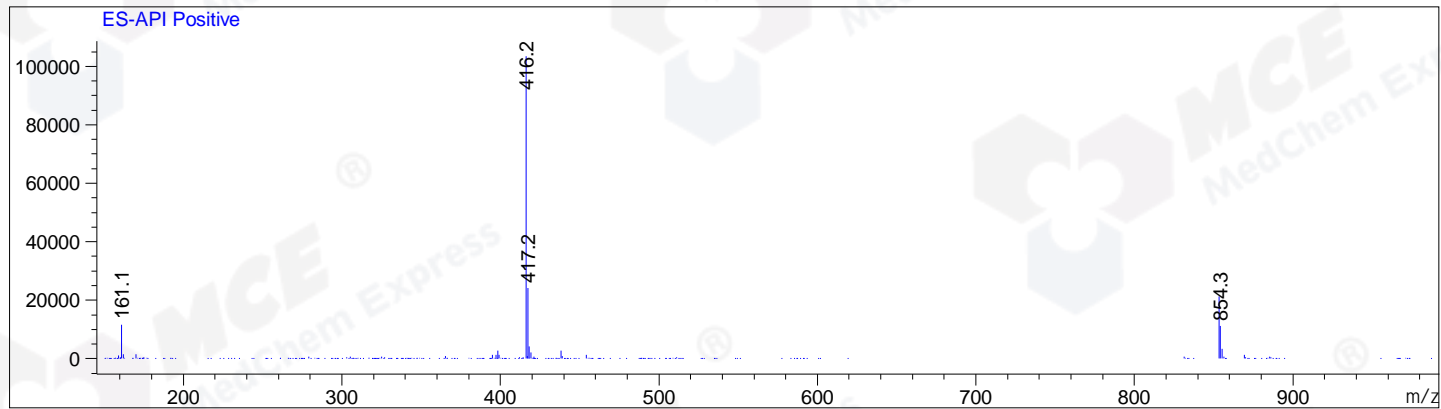
RetTim	Width	Area	Height	Area%	MS (+)
--------	-------	------	--------	-------	--------

## Integration Results for MSD1 TIC, MS File

RetTim	Width	Area	Height	Area%	MS (+)
1.00	0.06	2183351.50	637030.75	100.00	416

Ret. Time: 1.00

<<<< POSITIVE SPECTRA >>>>



\*\*\* End of Report \*\*\*