

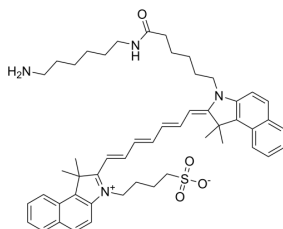
## ICG-amine

Cat. No.: HY-133884  
 CAS No.: 1686147-55-6  
 Batch No.: 249056  
 Chemical Name: 1H-Benz[e]indolium, 2-[7-[3-[6-[(6-aminohexyl)amino]-6-oxohexyl]-1,3-dihydro-1,1-dimethyl-2H-benz[e]indol-2-ylidene]-1,3,5-heptatrien-1-yl]-1,1-dimethyl-3-(4-sulfobutyl)-, inner salt

## PHYSICAL AND CHEMICAL PROPERTIES

Molecular Formula:  $C_{51}H_{64}N_4O_4S$   
 Molecular Weight: 829.14  
 Storage: Powder -20°C 3 years  
 In solvent -80°C 6 months  
 -20°C 1 month

Chemical Structure:



## ANALYTICAL DATA

Appearance: Green to dark green (Solid)  
 $^1H$  NMR Spectrum: Consistent with structure  
 LCMS: Consistent with structure  
 Purity (LCMS): 99.91%  
 Conclusion: The product has been tested and complies with the given specifications.

**Caution: Product has not been fully validated for medical applications. For research use only.**

Tel: 609-228-6898

Fax: 609-228-5909

E-mail: tech@MedChemExpress.com

Address: 1 Deer Park Dr, Suite Q, Monmouth Junction, NJ 08852, USA