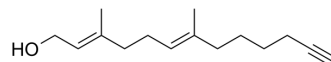


(2E,6E)-3,7-Dimethyltrideca-2,6-dien-12-yn-1-ol

Cat. No.:	HY-133927
CAS No.:	2361137-98-4
Molecular Formula:	C ₁₅ H ₂₄ O
Molecular Weight:	220.35
Target:	Others
Pathway:	Others
Storage:	Please store the product under the recommended conditions in the Certificate of Analysis.



BIOLOGICAL ACTIVITY

Description

(2E,6E)-3,7-Dimethyltrideca-2,6-dien-12-yn-1-ol is an isoprenoid analogue^[1]. (2E,6E)-3,7-Dimethyltrideca-2,6-dien-12-yn-1-ol is a click chemistry reagent, it contains an Alkyne group and can undergo copper-catalyzed azide-alkyne cycloaddition (CuAAC) with molecules containing Azide groups.

REFERENCES

[1]. Storck EM, et al. Dual chemical probes enable quantitative system-wide analysis of protein prenylation and prenylation dynamics. Nat Chem. 2019 Jun;11(6):552-561.

Caution: Product has not been fully validated for medical applications. For research use only.

Tel: 609-228-6898

Fax: 609-228-5909

E-mail: tech@MedChemExpress.com

Address: 1 Deer Park Dr, Suite Q, Monmouth Junction, NJ 08852, USA