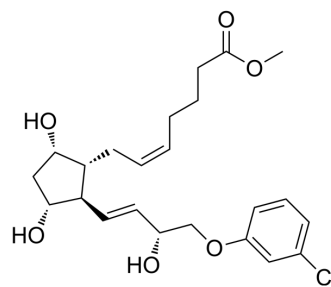


(+)-Cloprostenol methyl ester

Cat. No.:	HY-134009
CAS No.:	56687-85-5
Molecular Formula:	C ₂₃ H ₃₁ ClO ₆
Molecular Weight:	438.94
Target:	Others
Pathway:	Others
Storage:	Please store the product under the recommended conditions in the Certificate of Analysis.



BIOLOGICAL ACTIVITY

Description

(+)-Cloprostenol methyl ester is a 11,13-Dienone analog of cloprostenol (HY-107381)^[1].

REFERENCES

[1]. Vostrikov, et al. New 11,13-Dienone Analog of Cloprostenol. Russian Journal of Organic Chemistry, 2019, 55(10), 1465–1468.

Caution: Product has not been fully validated for medical applications. For research use only.

Tel: 609-228-6898

Fax: 609-228-5909

E-mail: tech@MedChemExpress.com

Address: 1 Deer Park Dr, Suite Q, Monmouth Junction, NJ 08852, USA