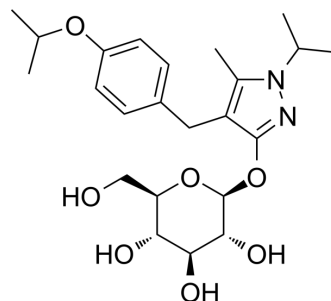


## Remogliflozin

Cat. No.:	HY-13414		
CAS No.:	329045-45-6		
Molecular Formula:	C <sub>23</sub> H <sub>34</sub> N <sub>2</sub> O <sub>7</sub>		
Molecular Weight:	450.53		
Target:	SGLT		
Pathway:	Membrane Transporter/Ion Channel		
Storage:	Powder	-20°C	3 years
		4°C	2 years
	In solvent	-80°C	6 months
		-20°C	1 month



### BIOLOGICAL ACTIVITY

Description	Remogliflozin is a potent and selective inhibitor of SGLT2 (sodium-glucose cotransporter 2) with K <sub>i</sub> s of 12.4 and 26 nM for human and rat SGLT2, respectively. Remogliflozin is the active form of Remogliflozin etabonate (HY-14945) <sup>[1]</sup> .
IC <sub>50</sub> & Target	SGLT2

### REFERENCES

[1]. Fujimori Y, et al. Remogliflozin etabonate, in a novel category of selective low-affinity sodium glucose cotransporter (SGLT2) inhibitors, exhibits antidiabetic efficacy in rodent models. *J Pharmacol Exp Ther.* 2008 Oct;327(1):268-76.

**Caution: Product has not been fully validated for medical applications. For research use only.**

Tel: 609-228-6898

Fax: 609-228-5909

E-mail: tech@MedChemExpress.com

Address: 1 Deer Park Dr, Suite Q, Monmouth Junction, NJ 08852, USA