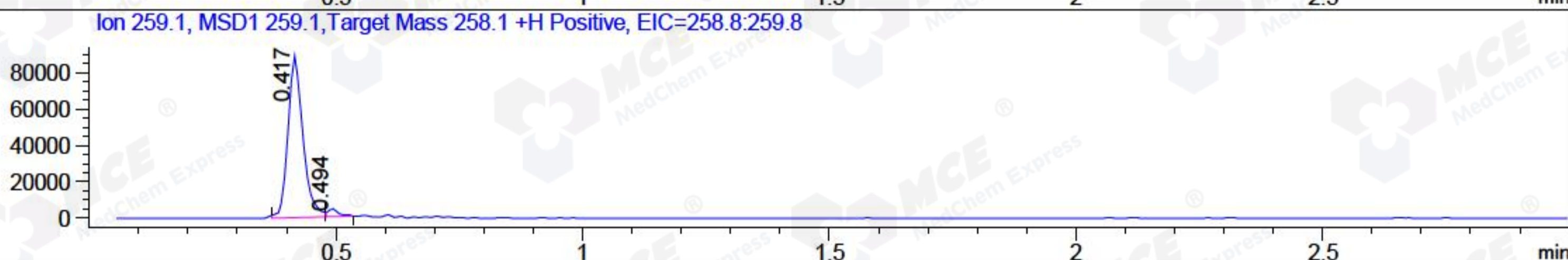
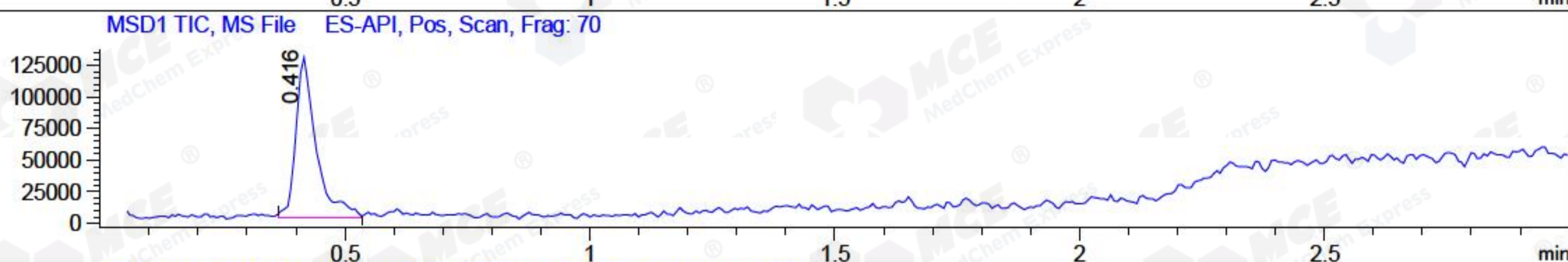
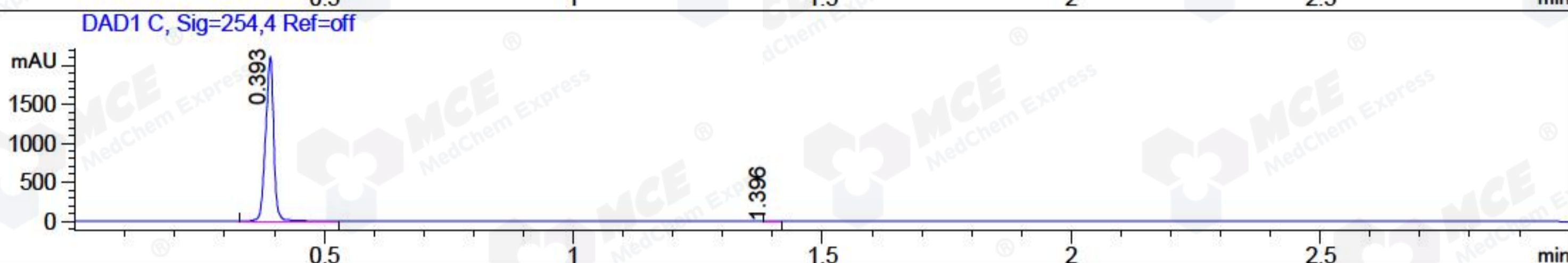
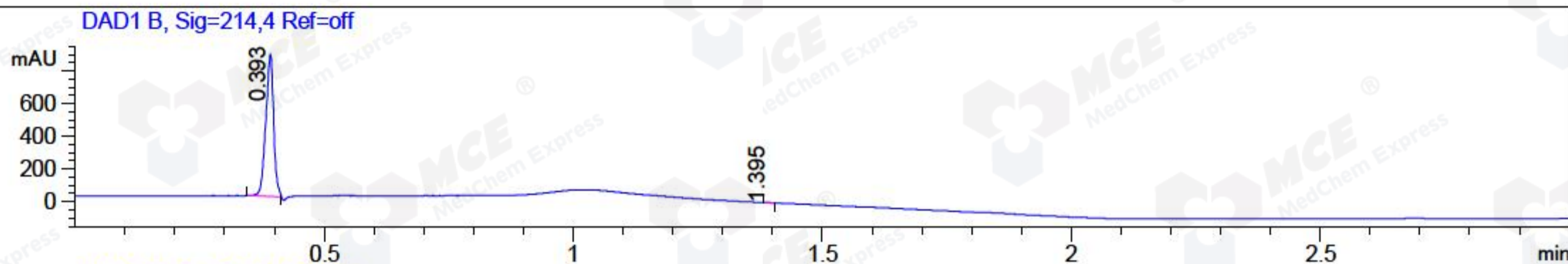


File ..DATA\2018\20181107\481\BIZ2018-N06-WYQ6.D Tgt Mass (CHM) :
 Injection Date : 7 Nov 18 12:12 pm +0800 Seq. Line : 32
 Sample Name : BIZ2018-N06-WYQ6 Location : P2-D-01
 Acq. Operator : LQ_1052 Inj : 1
 Spec. Reported : MS Integration Inj Volume : 2 ul
 Acq. Method : D:\Chem32\1\data\2018\20181107\481\1-POS-3MIN-1.M
 Analysis Method : D:\CHEM32\1\DATA\2018\20181107\481\1-POS-3MIN-1.M
 Catalog No : HY-13417 Batch#34104 A-RP-314
 Method Info : Mobile Phase: A: water(0.01%TFA) B:ACN(0.01%TFA)
 Gradient: 5% to 95%B within 1.3 min
 Flow Rate : 1.8ml/min
 Column :SunFire C18, 4.6*50mm,3.5um A-RP-314
 Oven Temperature : 45□



Integration Results for DAD1 B, Sig=214,4 Ref=off

RetTim	Width	Area	Height	Area%	MS (+)
0.39	0.02	955.74	868.80	99.92	259
1.39	0.02	0.76	0.83	0.08	292

Integration Results for DAD1 C, Sig=254,4 Ref=off

RetTim	Width	Area	Height	Area%	MS (+)
0.39	0.02	2397.13	2112.38	99.97	259
1.40	0.02	0.83	0.74	0.03	141

Integration Results for MSD1 TIC, MS File

RetTim	Width	Area	Height	Area%	MS (+)
0.42	0.04	361400.31	126582.98	100.00	259

Ret. Time: 0.42

<<<< POSITIVE SPECTRA >>>>

ES-API Positive

