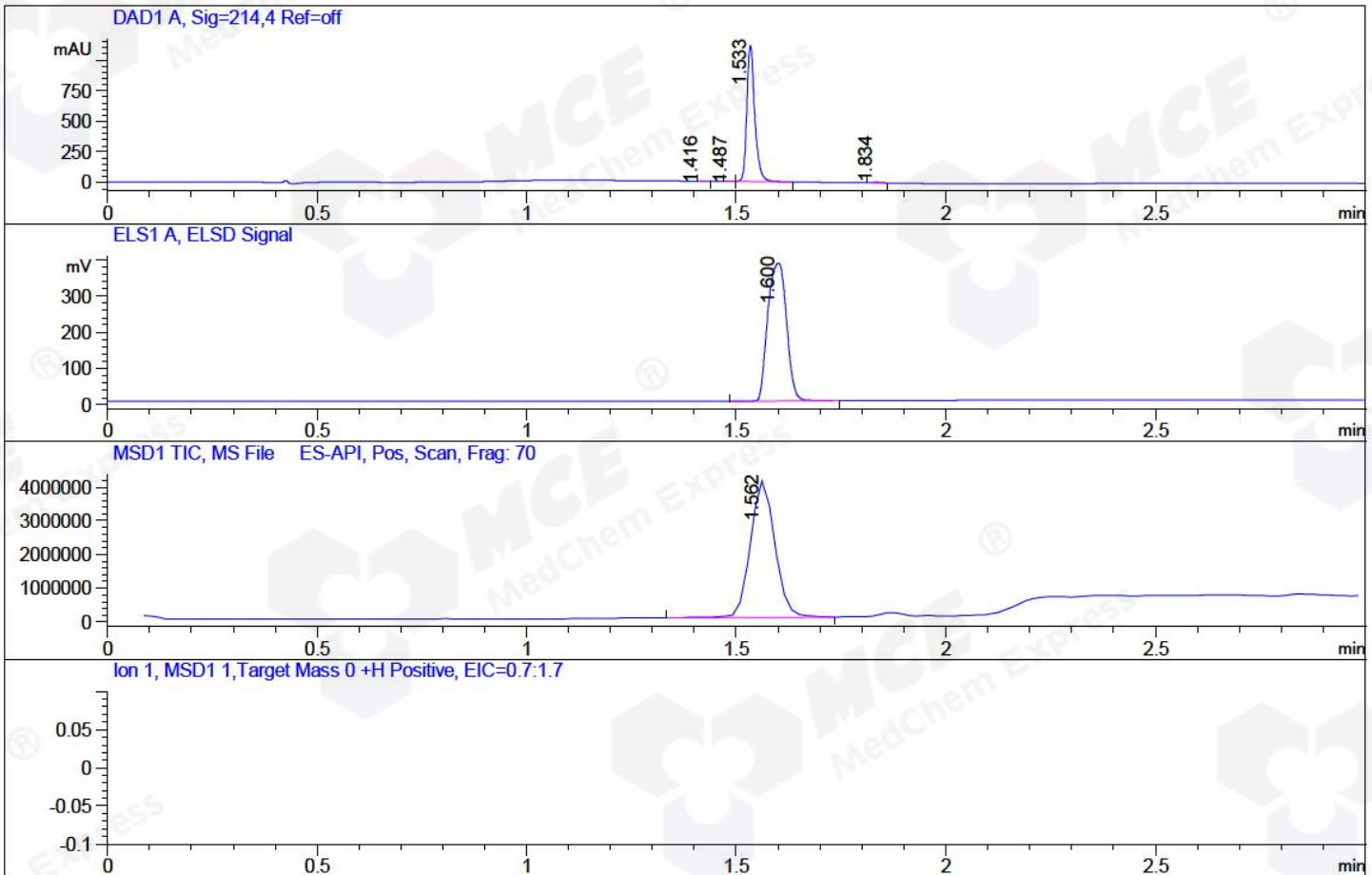


File ..Data\2018\20180224\20180224S\SX5280-001-1.D Tgt Mass (CHM):  
 Injection Date : 24 Feb 18 3:06 pm +0800 Seq. Line : 80  
 Sample Name : SX5280-001-1 Location : P1-F-10  
 Acq. Operator : SYSTEM Inj : 1  
 Spec. Reported : MS Integration Inj Volume : 1 ul  
 Acq. Method : D:\LCMS03\Data\2018\20180224\20180224S\1-POS-3MIN.M  
 Analysis Method : D:\LCMS03\Data\2018\20180224\20180224S\1-POS-3MIN.M  
 Catalog No : HY-13419 Batch#28792  
 Method Info : Mobile Phase: A: water(0.01%TFA) B:ACN(0.01%TFA)  
 Gradient: 5% to 95%B within 1.3 min  
 Flow Rate :1.8ml/min  
 Column :SunFire C18, 4.6\*50mm,3.5um A-RP-186  
 Oven Temperature : 45C



## Integration Results for DAD1 A, Sig=214,4 Ref=off

RetTim	Width	Area	Height	Area%	MS (+)
1.42	0.02	0.57	0.54	0.04	102
1.49	0.01	1.02	1.22	0.07	497
1.53	0.02	1466.39	1110.35	99.43	465
1.83	0.02	6.81	5.10	0.46	105

## Integration Results for ELS1 A, ELSD Signal

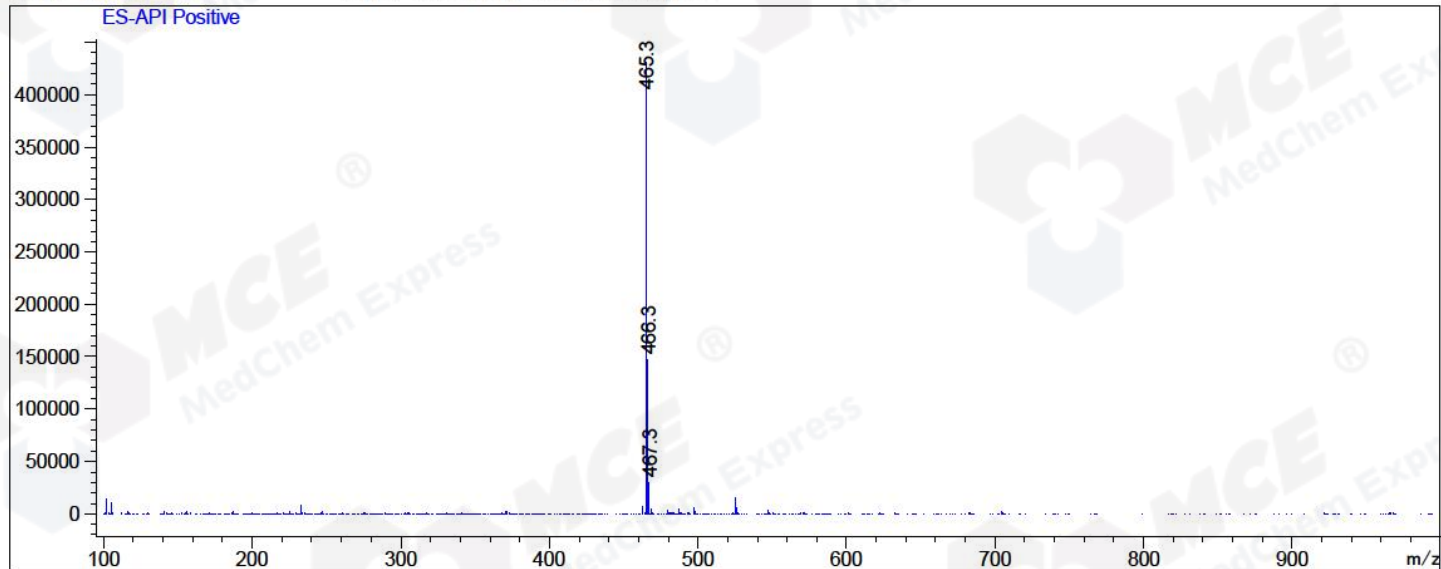
RetTim	Width	Area	Height	Area%	MS (+)
1.60	0.05	1175.85	379.12	100.00	465

## Integration Results for MSD1 TIC, MS File

RetTim	Width	Area	Height	Area%	MS (+)
1.56	0.06	16533222.00	4057521.00	100.00	465

Ret. Time: 1.56

<<<< POSITIVE SPECTRA >>>>



\*\*\* End of Report \*\*\*