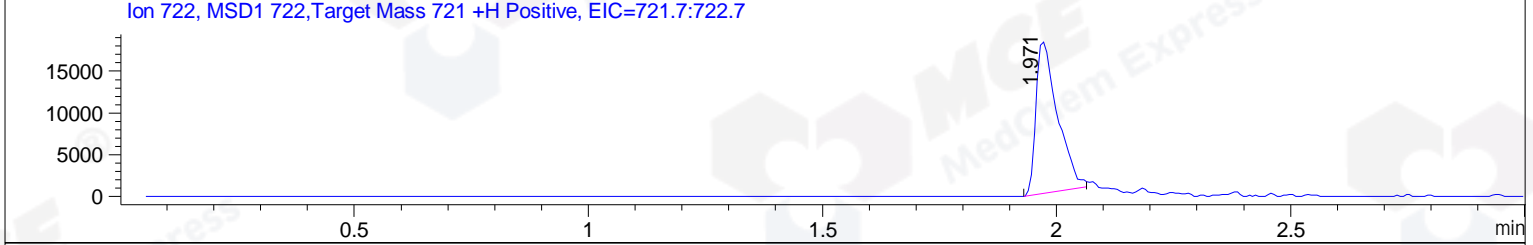
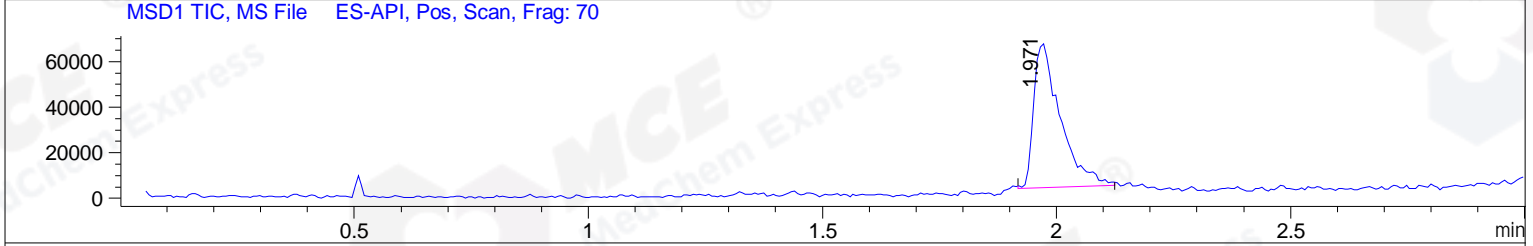
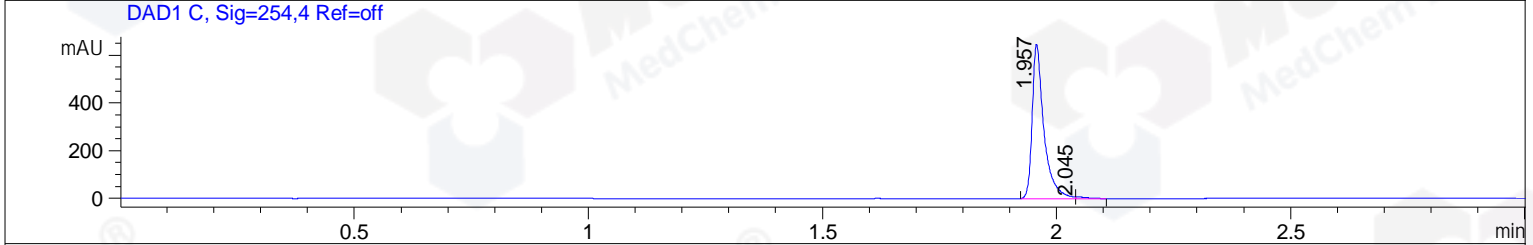
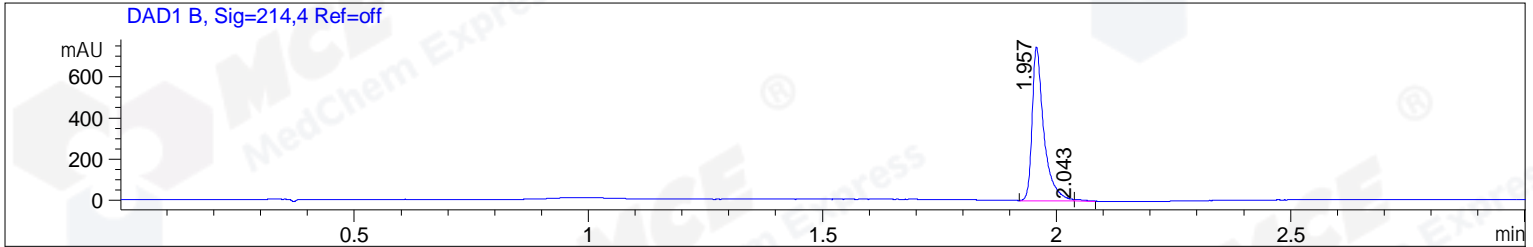


File ..DATA\2019\20191203\782\CPK2019-D03-24226-.D Tgt Mass (CHM):
 Injection Date : 3 Dec 19 3:35 pm +0800 Seq. Line : 86
 Sample Name : CPK2019-D03-24226 Location : PL-D-08
 Acq. Operator : ZJ_1432 Inj : 1
 Spec. Reported : MS Integration Inj Volume : 1.3 ul
 Acq. Method : D:\Chem32\1\data\2019\20191203\782\1-POS-3MIN.M
 Analysis Method : D:\CHEM32\1\DATA\2019\20191203\782\1-POS-3MIN.M
 Catalog No : HY-13428 Batch#24226
 Method Info : Mobile Phase: A: water(0.01%TFA) B:ACN(0.01%TFA)
 Gradient: 5% to 95%B within 1.3 min
 Flow Rate :1.8ml/min
 Column :SunFire C18, 4.6*50mm,3.5um A-RP-433
 Oven Temperature : 45



Integration Results for DAD1 B, Sig=214,4 Ref=off

RetTim	Width	Area	Height	Area%	MS (+)
1.96	0.03	1299.82	747.27	99.17	430
2.04	0.02	10.93	7.50	0.83	430

Integration Results for DAD1 C, Sig=254,4 Ref=off

RetTim	Width	Area	Height	Area%	MS (+)
1.96	0.03	1132.46	648.49	98.90	430
2.05	0.03	12.60	7.73	1.10	430

Integration Results for MSD1 TIC, MS File

RetTim	Width	Area	Height	Area%	MS (+)
1.97	0.06	250858.19	63632.94	100.00	430

Ret. Time: 1.97

<<<< POSITIVE SPECTRA >>>>

ES-API Positive

