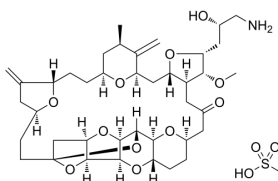


## Eribulin (mesylate)

Cat. No.:	HY-13442A
CAS No.:	441045-17-6
Batch No.:	160180
Chemical Name:	11,15:18,21:24,28-Trieпоxy-7,9-ethano-12,15-methano-9H,15H-furo[3,2-i]furo[2',3':5,6]pyrano[4,3-b][1,4]dioxacyclopentacosin-5(4H)-one, 2-[(2S)-3-amino-2-hydroxypropyl]hexacosahydro-3-methoxy-26-methyl-20,27-bis(methylene)-, (2R,3R,3aS,7R,8aS,9S,10aR,11S,12R,13aR,13bS,15S,18S,21S,24S,26R,28R,29aS)-, methanesulfonate (1:1)

### PHYSICAL AND CHEMICAL PROPERTIES

Molecular Formula:	C <sub>41</sub> H <sub>63</sub> NO <sub>14</sub> S
Molecular Weight:	826.00
Storage:	-80°C, protect from light, stored under nitrogen
Chemical Structure:	



### ANALYTICAL DATA

Appearance:	White to off-white (Solid)
<sup>1</sup> H NMR Spectrum:	Consistent with structure
MS:	Consistent with structure
Purity (HPLC):	99.87%
Conclusion:	The product has been tested and complies with the given specifications.

**Caution: Product has not been fully validated for medical applications. For research use only.**

Tel: 609-228-6898

Fax: 609-228-5909

E-mail: tech@MedChemExpress.com

Address: 1 Deer Park Dr, Suite Q, Monmouth Junction, NJ 08852, USA