

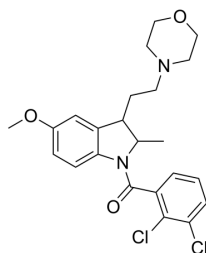
## ML-SI1

Cat. No.: HY-134818  
 Batch No.: 104734  
 Chemical Name: (2,3-Dichlorophenyl)(5-methoxy-2-methyl-3-(2-morpholinoethyl)indolin-1-yl)methanone(mixture of diastereomers)

### PHYSICAL AND CHEMICAL PROPERTIES

Molecular Formula:  $C_{23}H_{26}Cl_2N_2O_3$   
 Molecular Weight: 449.37  
 Storage: Powder -20°C 3 years  
 4°C 2 years  
 In solvent -80°C 6 months  
 -20°C 1 month

#### Chemical Structure:



Mixture of diastereomers

### ANALYTICAL DATA

Appearance: Off-white to yellow (Solid)  
 LCMS: Consistent with structure  
 Purity (LCMS): 99.85%  
 Conclusion: The product has been tested and complies with the given specifications.

**Caution: Product has not been fully validated for medical applications. For research use only.**

Tel: 609-228-6898

Fax: 609-228-5909

E-mail: tech@MedChemExpress.com

Address: 1 Deer Park Dr, Suite Q, Monmouth Junction, NJ 08852, USA