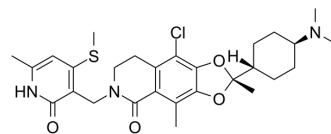


CPI-1328

Cat. No.:	HY-134899
CAS No.:	2390367-27-6
Molecular Formula:	C ₂₈ H ₃₆ ClN ₃ O ₄ S
Molecular Weight:	546.12
Target:	Histone Methyltransferase
Pathway:	Epigenetics
Storage:	Please store the product under the recommended conditions in the Certificate of Analysis.



BIOLOGICAL ACTIVITY

Description	CPI-1328 is an EZH2 inhibitor with a K _i value of 63 fM.
IC ₅₀ & Target	EZH2

REFERENCES

[1]. Stuckey JI, et al. Identification and characterization of second-generation EZH2 inhibitors with extended residence times and improved biological activity. *J Biol Chem.* 2021 Jan-Jun;296:100349.

Caution: Product has not been fully validated for medical applications. For research use only.

Tel: 609-228-6898

Fax: 609-228-5909

E-mail: tech@MedChemExpress.com

Address: 1 Deer Park Dr, Suite Q, Monmouth Junction, NJ 08852, USA