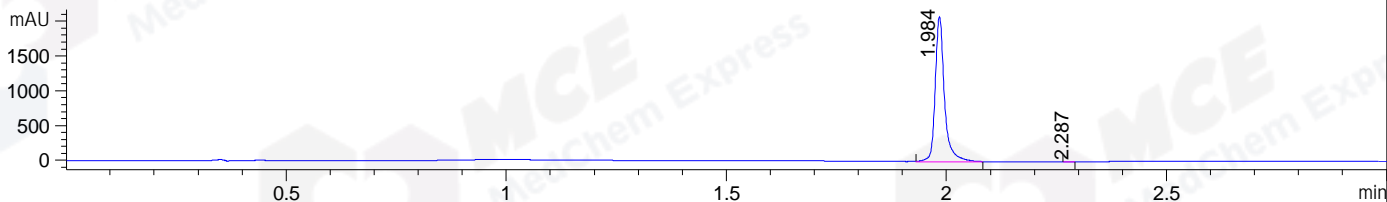
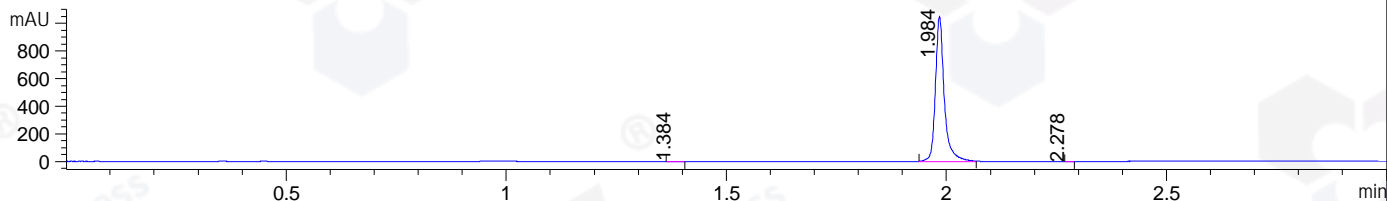


File ..\DATA\2019\20190414\562\CPK2019-410-20991.D Tgt Mass (CHM):
 Injection Date : 14 Apr 19 4:16 pm +0800 Seq. Line : 18
 Sample Name : CPK2019-410-20991 Location : P1-D-07
 Acq. Operator : LQ_1052 Inj : 1
 Spec. Reported : MS Integration Inj Volume : 1 ul
 Acq. Method : D:\Chem32\1\data\2019\20190414\562\1-POS-3MIN-1.M
 Analysis Method : D:\CHEM32\1\DATA\2019\20190414\562\1-POS-3MIN-1.M
 Catalog No : HY-13495 Batch#20991
 Method Info : Mobile Phase: A: water(0.01%TFA) B:ACN(0.01%TFA)
 Gradient: 5% to 95%B within 1.3 min
 Flow Rate :1.8ml/min
 Column :SunFire C18, 4.6*50mm,3.5um A-RP-314
 Oven Temperature : 45□

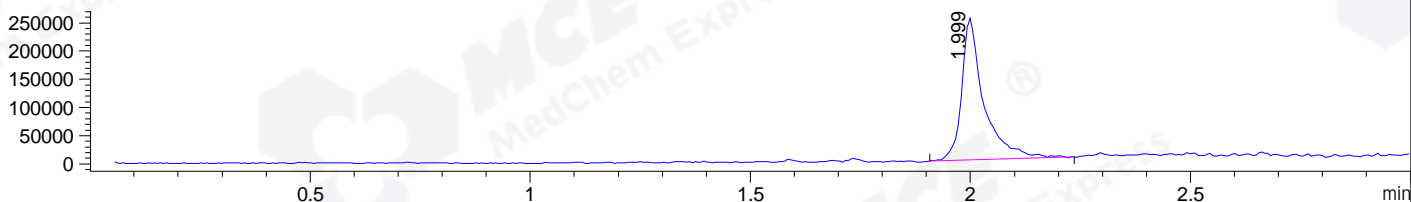
DAD1 B, Sig=214,4 Ref=off



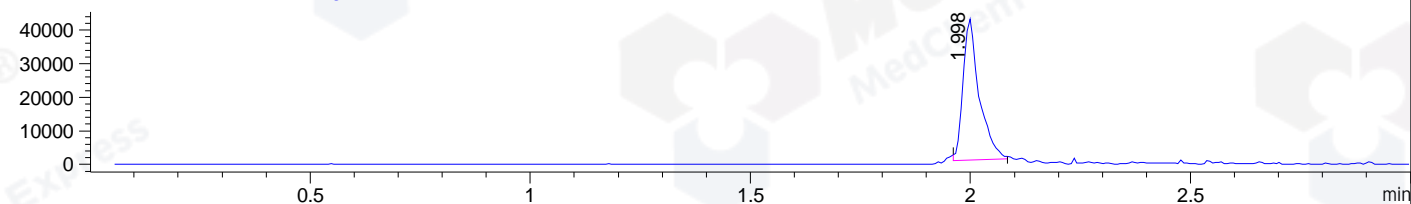
DAD1 C, Sig=254,4 Ref=off



MSD1 TIC, MS File ES-API, Pos, Scan, Frag: 70



Ion 390.5, MSD1 390.5, Target Mass 389.5 +H Positive, EIC=390.2:391.2



Integration Results for DAD1 B, Sig=214,4 Ref=off

RetTim	Width	Area	Height	Area%	MS (+)
1.98	0.02	3074.04	2088.83	99.98	390
2.29	0.02	0.52	0.39	0.02	142

Integration Results for DAD1 C, Sig=254,4 Ref=off

RetTim	Width	Area	Height	Area%	MS (+)
1.38	0.02	1.78	1.50	0.12	ND
1.98	0.02	1485.07	1053.27	99.85	390
2.28	0.01	0.38	0.44	0.03	142

Integration Results for MSD1 TIC, MS File

RetTim	Width	Area	Height	Area%	MS (+)
2.00	0.05	870476.44	251156.11	100.00	390

Ret. Time: 2.00

<<<< POSITIVE SPECTRA >>>>

ES-API Positive

