

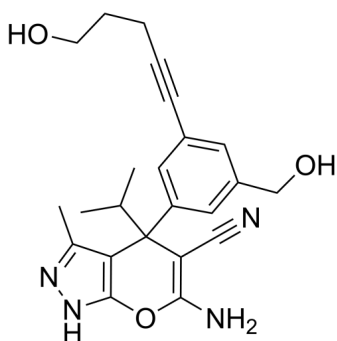
(Rac)-SHIN2

Cat. No.: HY-134978
Batch No.: 263841
CAS No.: 2204289-53-0
Molecular Formula: C₂₃H₂₆N₄O₃

ANALYTICAL DATA

Theoretical: C(-), H(-), N(-), Peptide Content(≥60.0%)
Result: C(42.01%), H(6.00%), N(19.26%), Peptide Content(83.90%)

Chemical Structure:



Caution: Product has not been fully validated for medical applications. For research use only.

Tel: 609-228-6898

Fax: 609-228-5909

E-mail: tech@MedChemExpress.com

Address: 1 Deer Park Dr, Suite Q, Monmouth Junction, NJ 08852, USA