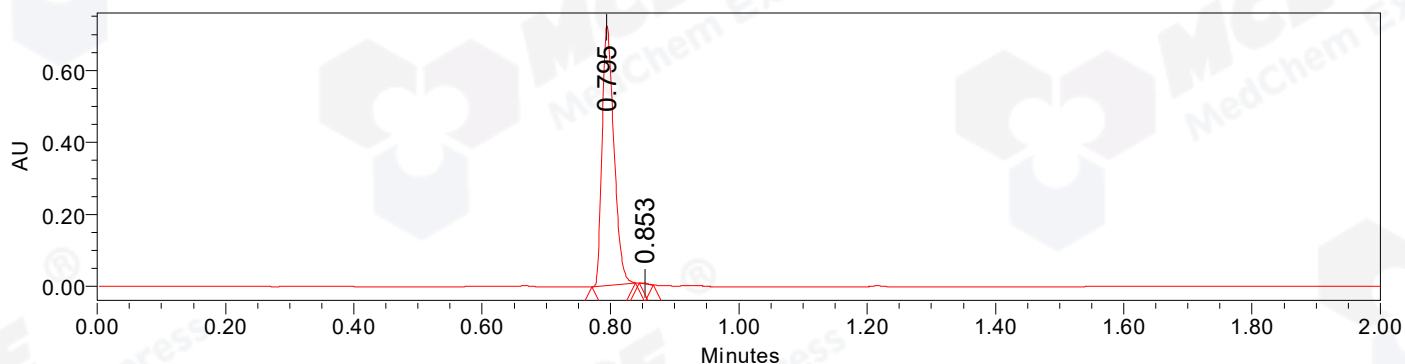


## SAMPLE INFORMATION

CAS NO.: 1346704-33-3  
Sample information:  
Vial: 2:B,5  
Injection #: 1  
Injection Volume: 3.00 ul  
Run Time: 2.8 Minutes  
Sample Set Name: 20220913

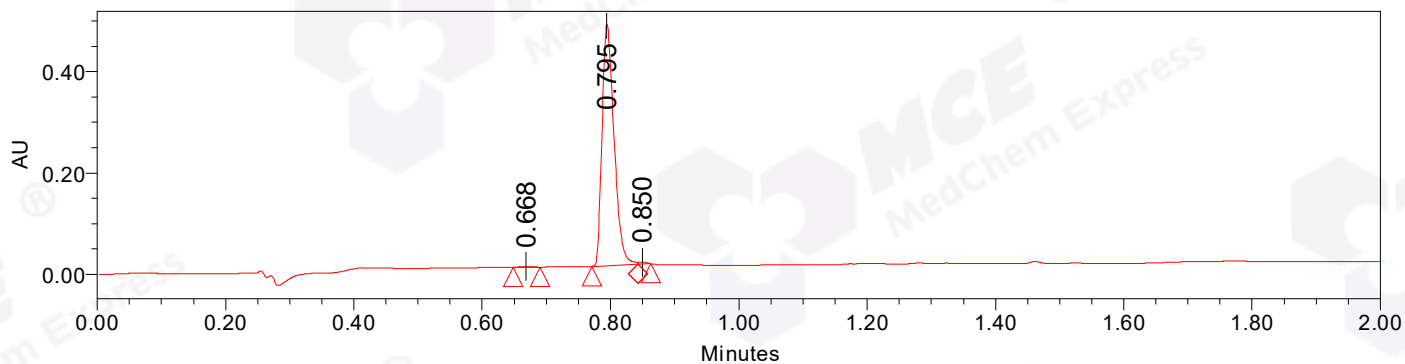
Acquired By: LY  
Date Acquired: 9/13/2022 5:40:15 PM CST  
Acq. Method Set: 1\_POS\_2MIN  
Date Processed: 9/14/2022 1:23:20 PM CST,  
Processing Method: PDA\_01, MS\_scan  
Channel Name: PDA Ch1 214nm@4.8nm, MS TIC,  
Column Name: A-RP-985

### Auto-Scaled Chromatogram



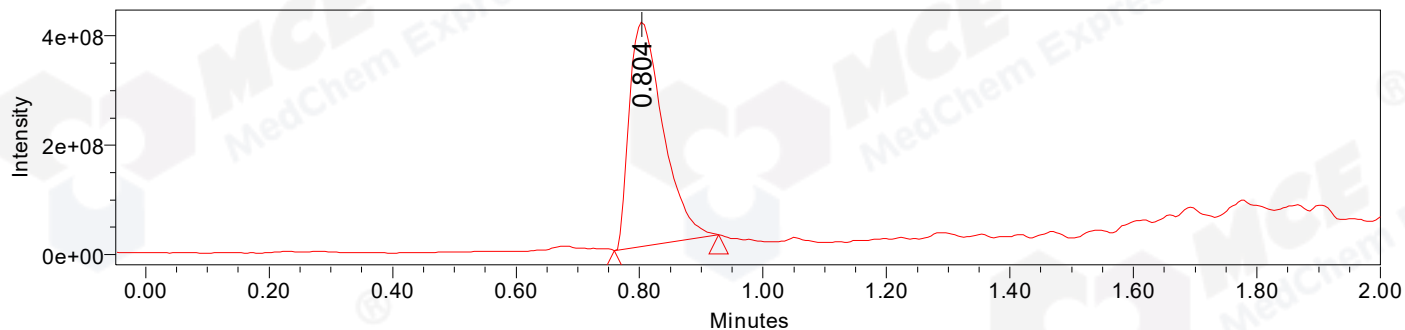
Processed Channel Descr. PDA Ch2 254nm@4.8nm

### Auto-Scaled Chromatogram



Processed Channel Descr. PDA Ch1 214nm@4.8nm

### Auto-Scaled Chromatogram



Processed Channel Descr. ACQ-SQD2 1: MS Scan MS TIC, Smoothed by 9 point Savitzky-Golay Filter., Time offset by -0.053 mins. (1: 150.00-1000.00 ES+, Centroid, CV=30)

Peak Results  
Channel Name: PDA Ch2 254nm@4.8nm

	RT	Width (sec)	Area	Height	% Area	Base Peak (Combined) (m/z)	Channel Name
1	0.795	4.100	921523	721566	99.88	150.93	PDA Ch2 254nm@4.8nm
2	0.853	1.300	1111	1589	0.12	542.37	PDA Ch2 254nm@4.8nm

Peak Results  
Channel Name: PDA Ch1 214nm@4.8nm

	RT	Width (sec)	Area	Height	% Area	Base Peak (Combined) (m/z)	Channel Name
1	0.668	2.500	1580	1272	0.25	152.93	PDA Ch1 214nm@4.8nm
2	0.795	4.300	616455	476704	99.22	151.04	PDA Ch1 214nm@4.8nm
3	0.850	1.200	3277	3669	0.53	271.94	PDA Ch1 214nm@4.8nm

Peak Results  
Channel Name: MS TIC

	RT	Width (sec)	Area	Height	% Area	Base Peak (Combined) (m/z)	Channel Name
1	0.804	10.156	1562359650	410935253	100.00	271.87	MS TIC

Match Plot

