

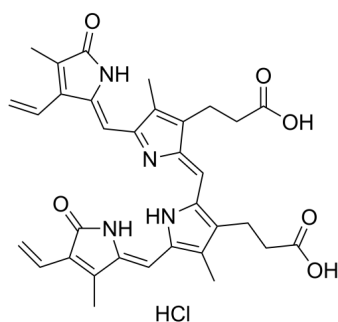
## Biliverdin (hydrochloride)

Cat. No.: HY-135005  
Batch No.: 258678  
CAS No.: 856699-18-8  
Molecular Formula: C<sub>33</sub>H<sub>35</sub>ClN<sub>4</sub>O<sub>6</sub>

### ANALYTICAL DATA

Theoretical: C(64.02%), H(5.70%), N(9.05%)  
Result: C(61.85%), H(5.89%), N(8.75%)

Chemical Structure:



**Caution: Product has not been fully validated for medical applications. For research use only.**

Tel: 609-228-6898

Fax: 609-228-5909

E-mail: [tech@MedChemExpress.com](mailto:tech@MedChemExpress.com)

Address: 1 Deer Park Dr, Suite Q, Monmouth Junction, NJ 08852, USA