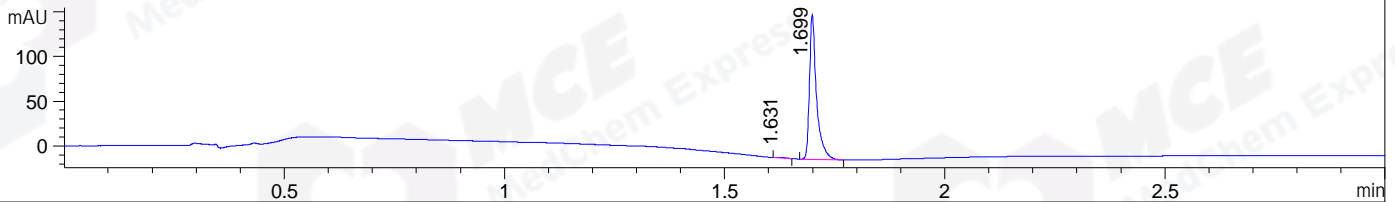
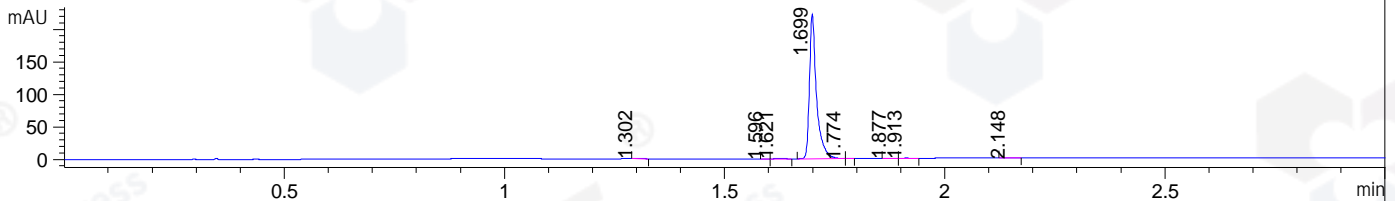


File ..212 2019-12-12 08-34-17\BIZ2019-D11-CXL19.D Tgt Mass (CHM):
 Injection Date : 12 Dec 19 7:53 pm +0800 Seq. Line : 132
 Sample Name : BIZ2019-D11-CXL19 Location : P2-C-05
 Acq. Operator : SYSTEM Inj : 1
 Spec. Reported : MS Integration Inj Volume : 0.5 ul
 Acq. Method : D:\LCMS03\Data\20191212\20191212 2019-12-12 08-34-17\1-POS-3MIN.M
 Analysis Method : D:\CHEM32\1\DATA\2019\20191212\20191212 2019-12-12 08-34-17\1-POS-3MIN.M
 Catalog No : HY-135008 Batch#57625
 Method Info : Mobile Phase: A: water(0.01%TFA) B:ACN(0.01%TFA)
 Gradient: 5% to 95%B within 1.3 min
 Flow Rate :1.8ml/min
 Column :SunFire C18, 4.6*50mm,3.5um A-RP-446
 Oven Temperature : 45C

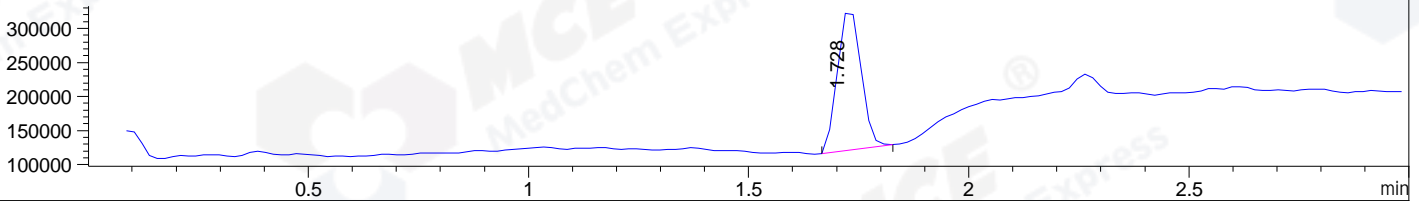
DAD1 A, Sig=214,4 Ref=off



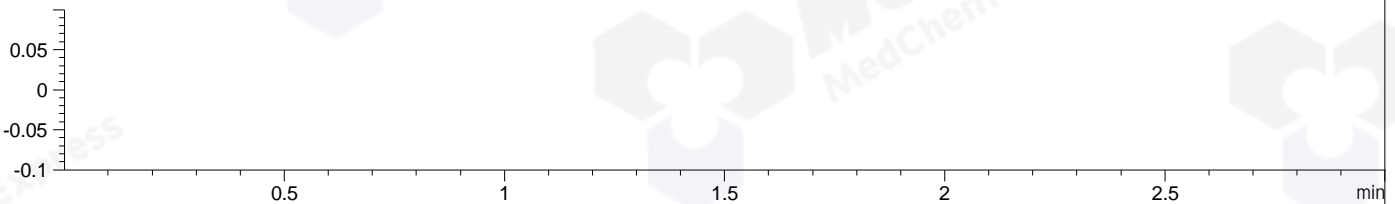
DAD1 B, Sig=254,4 Ref=off



MSD1 TIC, MS File ES-API, Pos, Scan, Frag: 70



Ion 1, MSD1 1, Target Mass 0 +H Positive, EIC=0.7:1.7



Integration Results for DAD1 A, Sig=214,4 Ref=off

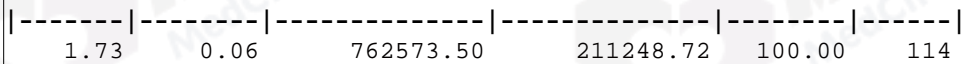
RetTim	Width	Area	Height	Area%	MS(+)
1.63	0.02	0.99	0.79	0.55	114
1.70	0.02	180.01	162.62	99.45	517

Integration Results for DAD1 B, Sig=254,4 Ref=off

RetTim	Width	Area	Height	Area%	MS(+)
1.30	0.01	0.32	0.37	0.13	114
1.60	0.01	0.07	0.11	0.03	114
1.62	0.02	0.53	0.47	0.21	114
1.70	0.02	247.00	222.90	99.31	517
1.77	0.01	0.06	0.14	0.02	114
1.88	0.02	0.21	0.19	0.09	114
1.91	0.03	0.26	0.16	0.10	114
2.15	0.02	0.26	0.18	0.10	114

Integration Results for MSD1 TIC, MS File

RetTim	Width	Area	Height	Area%	MS(+)
--------	-------	------	--------	-------	-------



Ret. Time: 1.73

<<<< POSITIVE SPECTRA >>>>

