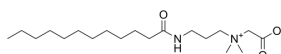


Lauroylamide propylbetaine

Cat. No.: HY-135057
CAS No.: 4292-10-8
Batch No.: 272455
Chemical Name: 1-Propanaminium, N-(carboxymethyl)-N,N-dimethyl-3-[(1-oxododecyl)amino]-, inner salt

PHYSICAL AND CHEMICAL PROPERTIES

Molecular Formula: C₁₉H₃₈N₂O₃
Molecular Weight: 342.52
Storage: Solution, -20°C, 1 year
Chemical Structure:



ANALYTICAL DATA

Appearance: Colorless to light yellow (Liquid)
PH: 5.15
Free amine: 0.29%
Sodium chloride: 5.31%
Active matter content: 35.02%
Water(KF): 65%
Conclusion: The product has been tested and complies with the given specifications.

Caution: Product has not been fully validated for medical applications. For research use only.

Tel: 609-228-6898

Fax: 609-228-5909

E-mail: tech@MedChemExpress.com

Address: 1 Deer Park Dr, Suite Q, Monmouth Junction, NJ 08852, USA