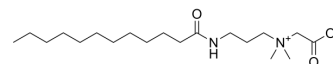


Lauroylamide propylbetaine

Cat. No.: HY-135057
 CAS No.: 4292-10-8
 Molecular Formula: $C_{19}H_{38}N_2O_3$
 Molecular Weight: 342.52
 Target: Others
 Pathway: Others
 Storage: Solution, -20°C, 1 year



BIOLOGICAL ACTIVITY

Description

Lauroylamide propylbetaine (Lauramidopropyl betaine) is a liquid detergent for cosmetic and hair compositions to enhance viscosity and has good biodegradability^[1].

REFERENCES

[1]. Lizhi Yi, et al. Methane hydrate formation in an oil-water system in the presence of lauroylamide propylbetaine. RSC Adv. 2020 Mar 25;10(21):12255-12261.

Caution: Product has not been fully validated for medical applications. For research use only.

Tel: 609-228-6898

Fax: 609-228-5909

E-mail: tech@MedChemExpress.com

Address: 1 Deer Park Dr, Suite Q, Monmouth Junction, NJ 08852, USA