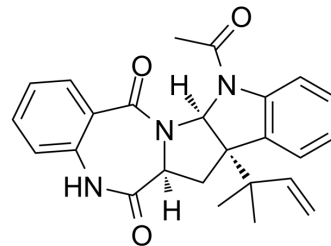


## epi-Aszonalenin A

<b>Cat. No.:</b>	HY-135154
<b>CAS No.:</b>	908853-14-5
<b>Molecular Formula:</b>	C <sub>25</sub> H <sub>25</sub> N <sub>3</sub> O <sub>3</sub>
<b>Molecular Weight:</b>	415.48
<b>Target:</b>	GABA Receptor
<b>Pathway:</b>	Membrane Transporter/Ion Channel; Neuronal Signaling
<b>Storage:</b>	Please store the product under the recommended conditions in the Certificate of Analysis.



### BIOLOGICAL ACTIVITY

#### Description

epi-Aszonalenin A is a benzodiazepine fungal metabolite originally isolated from *Aspergillus novofumigatus*. epi-Aszonalenin A can be used as a psychoactive agent<sup>[1]</sup>.

### REFERENCES

[1]. ChristianRank, et al. epi-Aszonalenins A, B, and C from *Aspergillus novofumigatus*. *Tetrahedron Letters*. 2006 August 21, 47 (34): 6099-6102

**Caution: Product has not been fully validated for medical applications. For research use only.**

Tel: 609-228-6898

Fax: 609-228-5909

E-mail: [tech@MedChemExpress.com](mailto:tech@MedChemExpress.com)

Address: 1 Deer Park Dr, Suite Q, Monmouth Junction, NJ 08852, USA