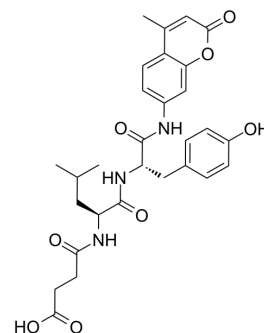


## Suc-Leu-Tyr-AMC

Cat. No.:	HY-135172
CAS No.:	94367-20-1
Molecular Formula:	C <sub>29</sub> H <sub>33</sub> N <sub>3</sub> O <sub>8</sub>
Molecular Weight:	552
Sequence:	{Suc}-Leu-Tyr-{AMC}
Sequence Shortening:	{Suc}-LY-{AMC}
Target:	Fluorescent Dye
Pathway:	Others
Storage:	Please store the product under the recommended conditions in the Certificate of Analysis.



### BIOLOGICAL ACTIVITY

#### Description

Suc-Leu-Tyr-AMC is a fluorometric peptide substrate for  $\mu$ -calpain and m-calpain. The excitation wavelength is 360 nm and the emission wavelength is 460 nm<sup>[1]</sup>.

### REFERENCES

[1]. Barrett MJ, et al. Effect of substrate on Ca<sup>2+</sup>(+)-concentration required for activity of the Ca<sup>2+</sup>(+)-dependent proteinases, mu- and m-calpain. Life Sci. 1991;48(17):1659-69.

**Caution: Product has not been fully validated for medical applications. For research use only.**

Tel: 609-228-6898

Fax: 609-228-5909

E-mail: tech@MedChemExpress.com

Address: 1 Deer Park Dr, Suite Q, Monmouth Junction, NJ 08852, USA