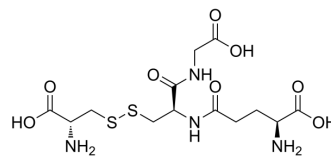


L-Cysteine-glutathione disulfide

Cat. No.:	HY-135174
CAS No.:	13081-14-6
Molecular Formula:	C ₁₃ H ₂₂ N ₄ O ₈ S ₂
Molecular Weight:	426.47
Target:	Endogenous Metabolite; Others
Pathway:	Metabolic Enzyme/Protease; Others
Storage:	Powder -20°C 3 years 4°C 2 years In solvent -80°C 2 years -20°C 1 year



BIOLOGICAL ACTIVITY

Description

L-Cysteine-glutathione disulfide is a metabolite in plasma that can be used in biomarker studies for tuberculosis cure^[1].

REFERENCES

[1]. Yi WJ, et al. L-Histidine, arachidonic acid, biliverdin, and L-cysteine-glutathione disulfide as potential biomarkers for cured pulmonary tuberculosis. *Biomed Pharmacother.* 2019;116:108980.

Caution: Product has not been fully validated for medical applications. For research use only.

Tel: 609-228-6898

Fax: 609-228-5909

E-mail: tech@MedChemExpress.com

Address: 1 Deer Park Dr, Suite Q, Monmouth Junction, NJ 08852, USA