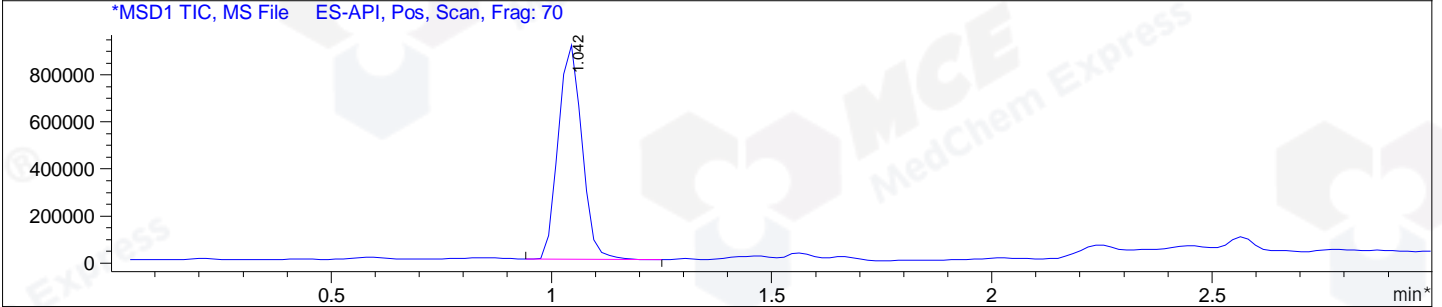
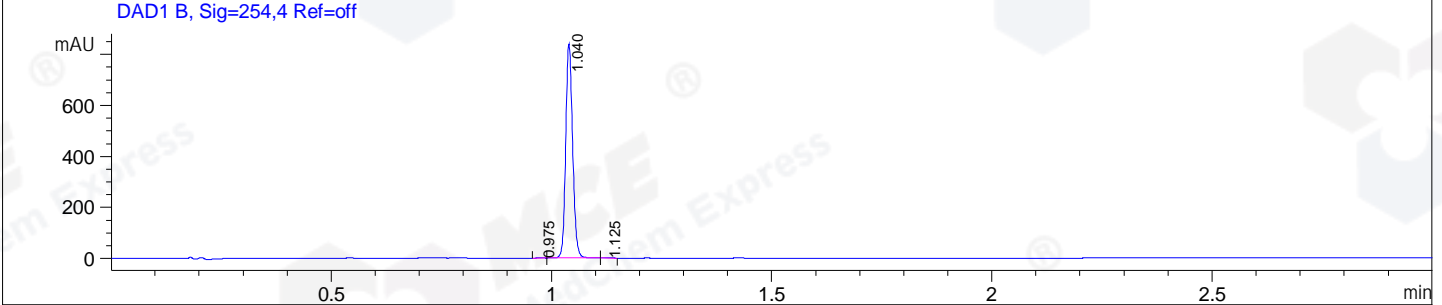
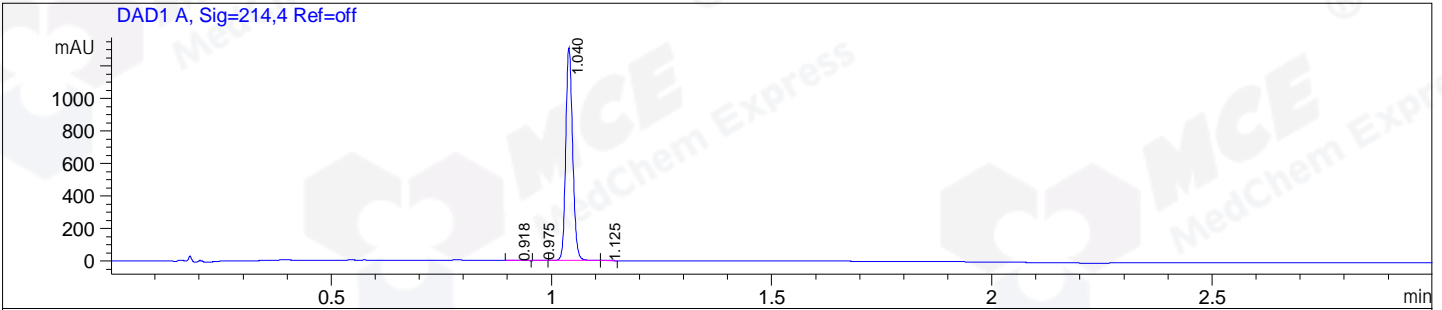


File E:\ChemStation\1\DATA\2024\2024-10\2024-10-18\CPK2024-017-121367-UPLC-MS-10-047038.D  
 Injection Date : 18-Oct-24, 11:42:32 Tgt Mass(EZX) :  
 Sample Name : CPK2024-017-121367 Location : P1-D-03  
 Acq. Operator : LY\_2278 Inj : 1  
 Spec. Reported : MS Integration Inj Volume : 3 ul  
 Acq. Method : E:\ChemStation\1\Methods\1-POS-UPLC3.0MIN(1.2)(150-1000).M  
 Analysis Method : E:\CHEMSTATION\1\METHODS\1-POS-UPLC3.0MIN(1.2)(150-1000).M  
 CAS NO. : 31430-18-9 WalkUp method: '1-POS-3MIN' Project: CPK2024  
 Method Info : Mobile Phase: A: water(0.01%TFA) B:ACN(0.01%TFA)  
 Gradient: 5% to 95%B within 2.0 min  
 Flow Rate :1.2ml/min  
 Column :Shim-pack Scepter C18-120, 3.0\*33mm,3um  
 Oven Temperature : 45C



Integration Results for DAD1 A, Sig=214,4 Ref=off

RetTim	Width	Area	Height	Area%
0.92	0.02	2.33	1.61	0.16
0.97	0.01	2.60	2.81	0.18
1.04	0.02	1424.64	1305.66	99.59
1.13	0.02	0.88	0.79	0.06

Integration Results for DAD1 B, Sig=254,4 Ref=off

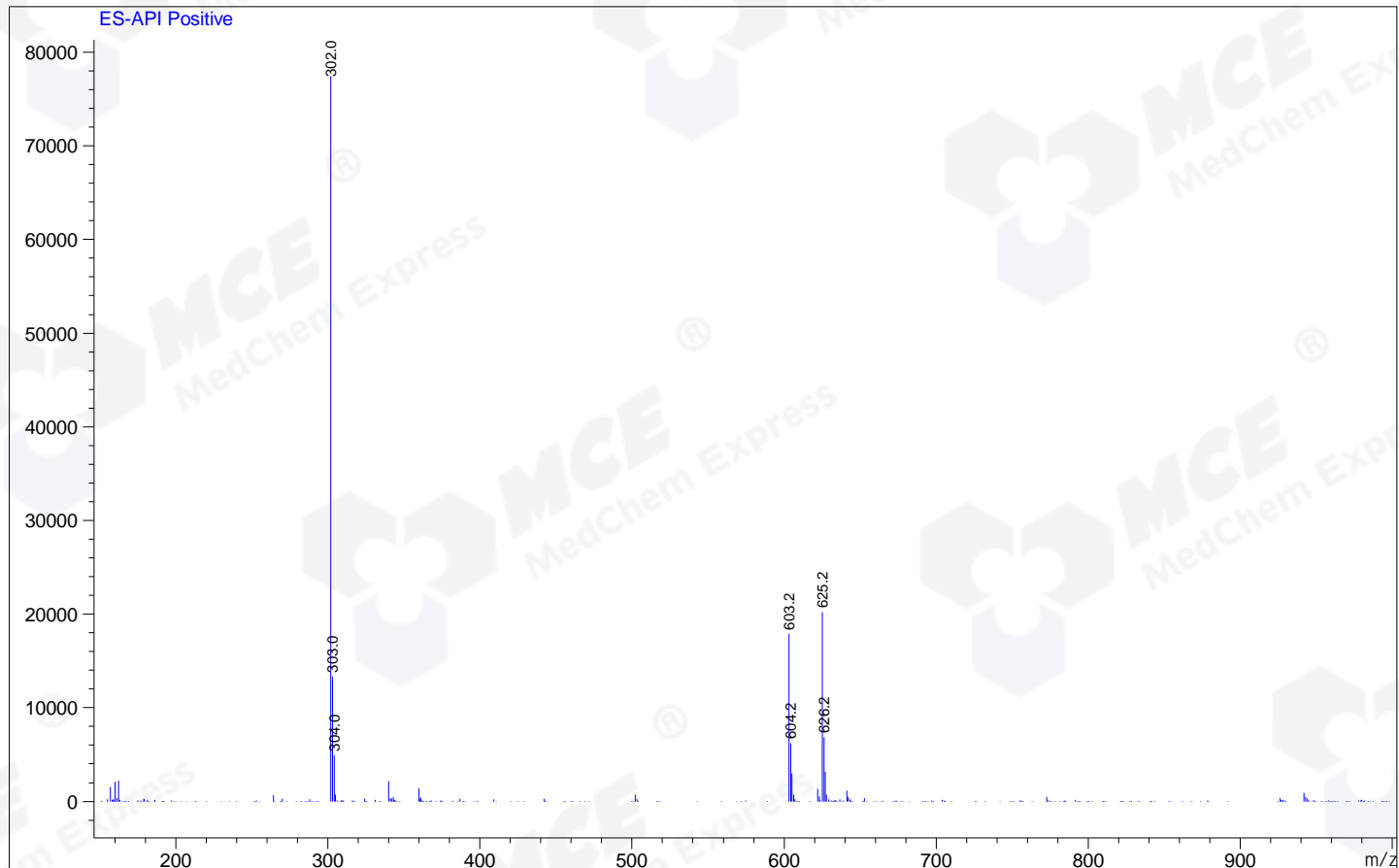
RetTim	Width	Area	Height	Area%
0.97	0.01	1.00	1.15	0.11
1.04	0.02	914.18	836.62	99.83
1.13	0.02	0.52	0.47	0.06

Integration Results for MSD1 TIC, MS File

RetTim	Width	Area	Height	Area%
1.04	0.06	3418417.50	915279.94	100.00

Ret. Time: 1.04

<<<< POSITIVE SPECTRA >>>>



\*\*\* End of Report \*\*\*