

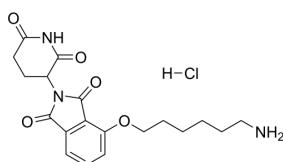
## Thalidomide-4-O-C6-NH2 (hydrochloride)

Cat. No.: HY-135250B  
 CAS No.: 2245697-88-3  
 Batch No.: 103694  
 Chemical Name: 1H-Isoindole-1,3(2H)-dione, 4-[(6-aminohexyl)oxy]-2-(2,6-dioxo-3-piperidinyl)-, hydrochloride (1:1)

### PHYSICAL AND CHEMICAL PROPERTIES

Molecular Formula:  $C_{19}H_{24}ClN_3O_5$   
 Molecular Weight: 409.86  
 Storage: 4°C, sealed storage, away from moisture and light  
 \* In solvent : -80°C, 6 months; -20°C, 1 month (sealed storage, away from moisture and light)

#### Chemical Structure:



### ANALYTICAL DATA

Appearance: Off-white to gray (Solid)  
 $^1H$  NMR Spectrum: Consistent with structure  
 LCMS: Consistent with structure  
 Purity (LCMS): 98.53%  
 Conclusion: The product has been tested and complies with the given specifications.

**Caution: Product has not been fully validated for medical applications. For research use only.**

Tel: 609-228-6898

Fax: 609-228-5909

E-mail: tech@MedChemExpress.com

Address: 1 Deer Park Dr, Suite Q, Monmouth Junction, NJ 08852, USA