

File ..DATA\2020\20200617\999\BIZ2020-616-SCH11-.D Tgt Mass (CHM):

Injection Date : 17 Jun 20 4:54 pm +0800 Seq. Line : 91

Sample Name : BIZ2020-616-SCH11 Location : PL-C-08

Acq. Operator : ZJ_1432 Inj : 1

Spec. Reported : MS Integration Inj Volume : 1.5 ul

Acq. Method : D:\Chem32\1\data\2020\20200617\999\1-POS-3MIN.M

Analysis Method : D:\CHEM32\1\DATA\2020\20200617\999\1-POS-3MIN.M

Catalog No : HY-135334

Method Info : Mobile Phase: A: water(0.01%TFA) B:ACN(0.01%TFA)

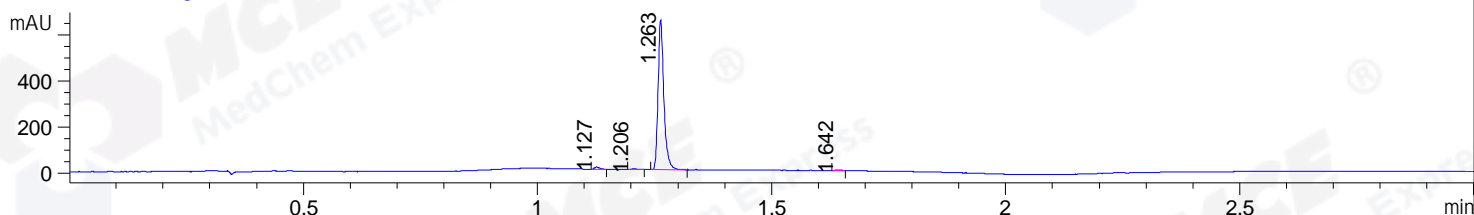
Gradient: 5% to 95%B within 1.3 min

Flow Rate :1.8ml/min

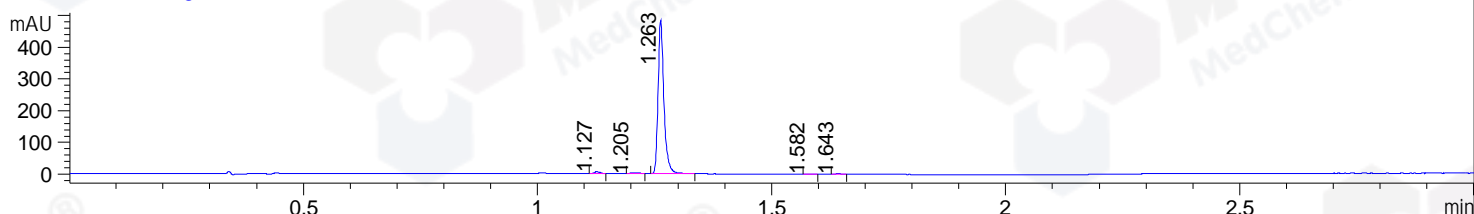
Column :SunFire C18, 4.6*50mm,3.5um A-RP-607

Oven Temperature : 45

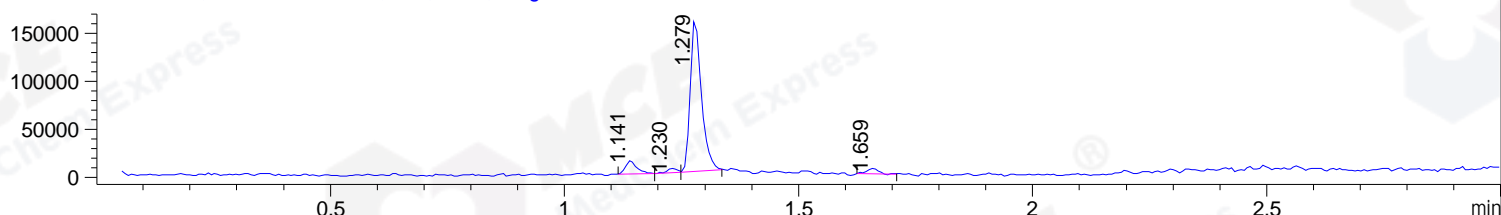
DAD1 B, Sig=214,4 Ref=off



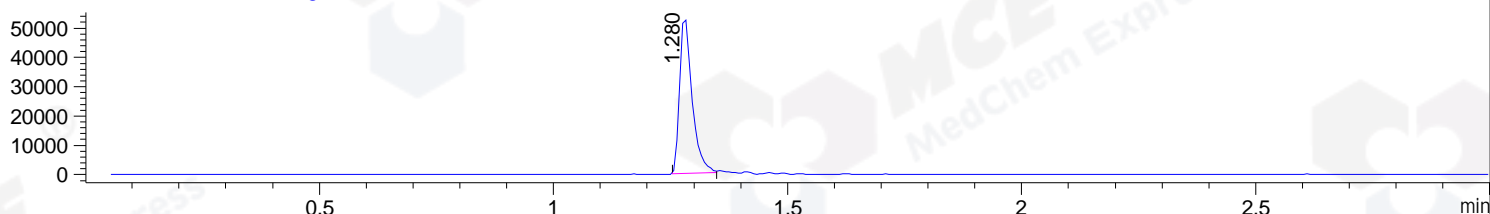
DAD1 C, Sig=254,4 Ref=off



MSD1 TIC, MS File ES-API, Pos, Scan, Frag: 70



Ion 482, MSD1 482, Target Mass 481 +H Positive, EIC=481.7:482.7



Integration Results for DAD1 B, Sig=214,4 Ref=off

RetTim	Width	Area	Height	Area%	MS (+)
1.13	0.01	7.26	9.56	1.27	514
1.21	0.01	1.45	2.21	0.25	ND
1.26	0.01	560.29	650.44	98.09	242
1.64	0.01	2.18	3.17	0.38	262

Integration Results for DAD1 C, Sig=254,4 Ref=off

RetTim	Width	Area	Height	Area%	MS (+)
1.13	0.01	3.88	5.47	0.91	514
1.21	0.02	2.30	2.31	0.54	ND
1.26	0.01	418.96	484.27	98.13	242
1.58	0.02	0.64	0.67	0.15	ND
1.64	0.01	1.17	1.44	0.28	ND

Integration Results for MSD1 TIC, MS File

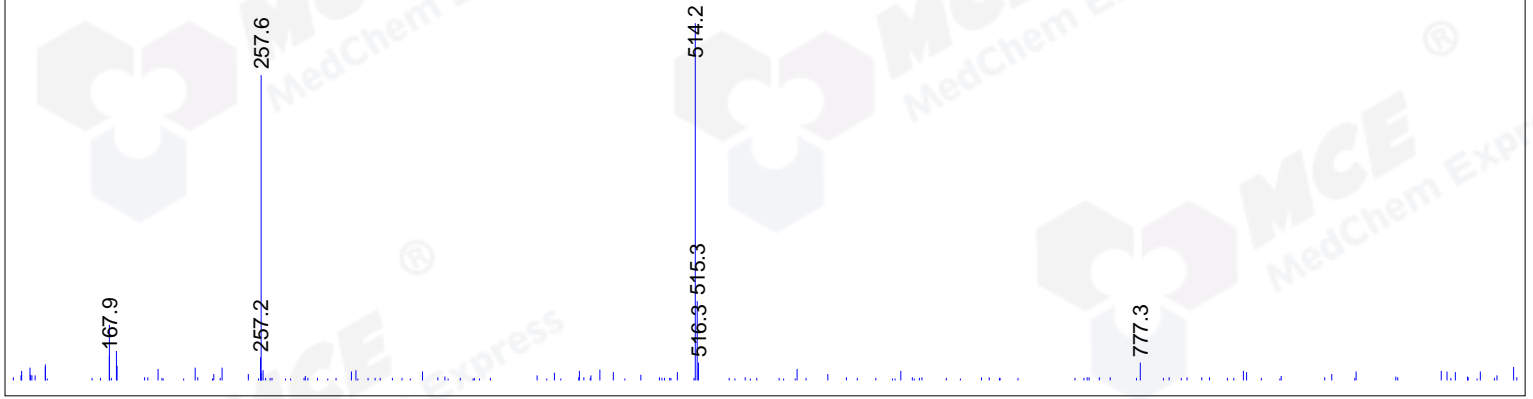
RetTim	Width	Area	Height	Area%	MS (+)
--------	-------	------	--------	-------	--------

1.14	0.03	24564.21	14537.23	8.04	514
1.23	0.02	6930.54	4653.54	2.27	ND
1.28	0.03	263612.19	159709.03	86.32	242
1.66	0.03	10269.99	5608.93	3.36	ND

Ret. Time: 1.14

<<<< POSITIVE SPECTRA >>>>

ES-API Positive



Ret. Time: 1.28

ES-API Positive

