

File ..\DATA\2019\20190618\594\BIZ2019-617-WYQ19.D Tgt Mass (CHM):

Injection Date : 18 Jun 19 11:16 am +0800 Seq. Line : 27

Sample Name : BIZ2019-617-WYQ19 Location : PI-A-07

Acq. Operator : ZJ_1432 Inj : 1

Spec. Reported : MS Integration Inj Volume : 1 ul

Acq. Method : D:\Chem32\1\data\2019\20190618\594\1-POS-3MIN-1(110-1500).M

Analysis Method : D:\CHEM32\1\DATA\2019\20190618\594\1-POS-3MIN-1(110-1500).M

Catalog No : HY-13534A Batch#42402

Method Info : Mobile Phase: A: water(0.01%TFA) B:ACN(0.01%TFA)

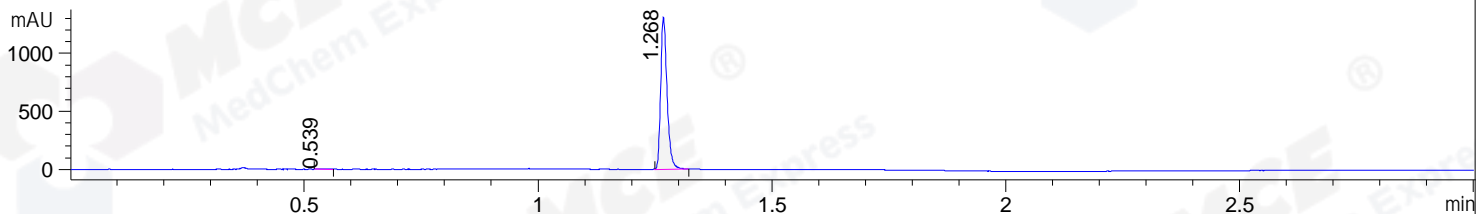
Gradient: 5% to 95%B within 1.3 min

Flow Rate :1.8ml/min

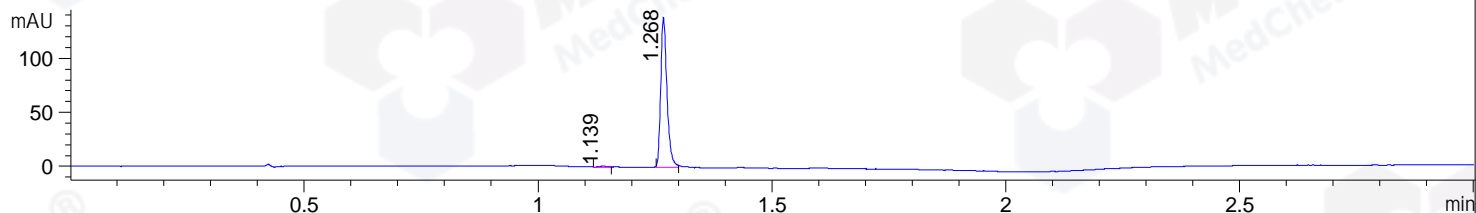
Column :SunFire C18, 4.6*50mm,3.5um A-RP-314

Oven Temperature : 45C

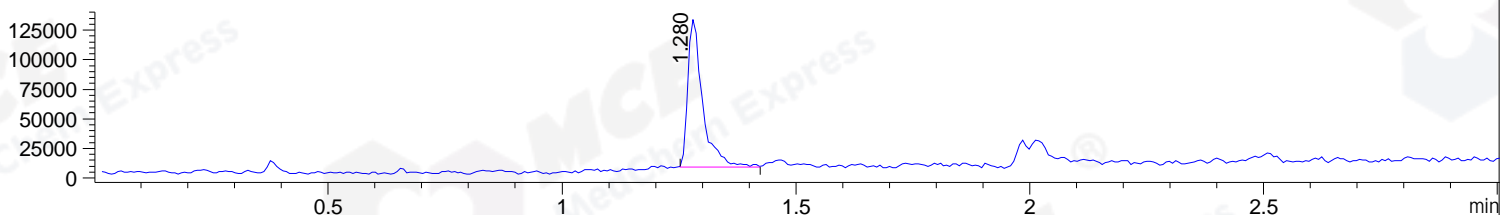
DAD1 B, Sig=214,4 Ref=off



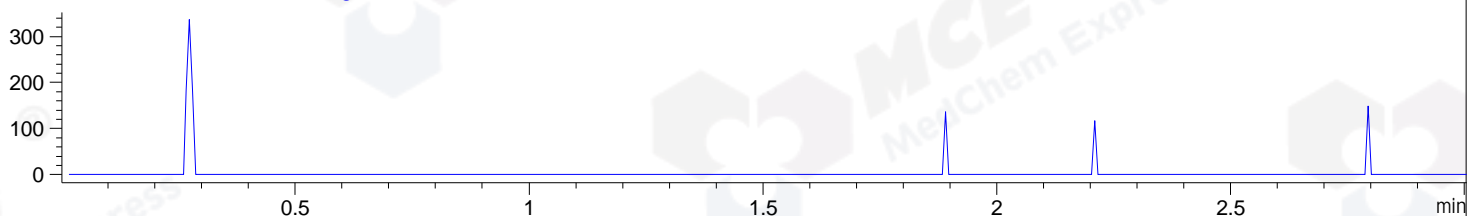
DAD1 C, Sig=254,4 Ref=off



MSD1 TIC, MS File ES-API, Pos, Scan, Frag: 70



Ion 1475.7, MSD1 1475.7, Target Mass 1474.7 +H Positive, EIC=1475.4:1476.4



Integration Results for DAD1 B, Sig=214,4 Ref=off

RetTim	Width	Area	Height	Area%	MS (+)
0.54	0.02	4.74	4.02	0.38	ND
1.27	0.01	1249.99	1314.45	99.62	708

Integration Results for DAD1 C, Sig=254,4 Ref=off

RetTim	Width	Area	Height	Area%	MS (+)
1.14	0.02	0.99	1.04	0.76	ND
1.27	0.01	129.07	138.96	99.24	708

Integration Results for MSD1 TIC, MS File

RetTim	Width	Area	Height	Area%	MS (+)
1.28	0.03	282657.88	124850.05	100.00	708

Ret. Time: 1.28

<<<< POSITIVE SPECTRA >>>>

ES-API Positive

