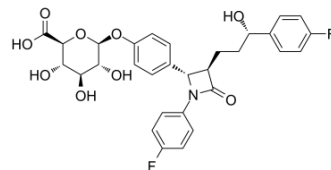


Ezetimibe phenoxy glucuronide

Cat. No.:	HY-135391
CAS No.:	190448-57-8
Molecular Formula:	C ₃₀ H ₂₉ F ₂ NO ₉
Molecular Weight:	585.55
Target:	Drug Metabolite
Pathway:	Metabolic Enzyme/Protease
Storage:	Please store the product under the recommended conditions in the Certificate of Analysis.



BIOLOGICAL ACTIVITY

Description	Ezetimibe phenoxy glucuronide (Ezetimibe glucuronide) is the active metabolite of Ezetimibe. Antihyperlipoproteinemic activity ^[1] . Ezetimibe is a potent cholesterol absorption inhibitor ^[2] .
In Vivo	After oral administration, Ezetimibe is absorbed in the small intestine and more than 80% of Ezetimibe metabolized to Ezetimibe Glucuronide ^[1] . MCE has not independently confirmed the accuracy of these methods. They are for reference only.

REFERENCES

- [1]. Stolk MF, et al. Severe hepatic side effects of ezetimibe. Clin Gastroenterol Hepatol. 2006 Jul;4(7):908-11.
- [2]. Lee DH, et al. Ezetimibe, an NPC1L1 inhibitor, is a potent Nrf2 activator that protects mice from diet-induced nonalcoholic steatohepatitis. Free Radic Biol Med. 2016 Sep 12;99:520-532.

Caution: Product has not been fully validated for medical applications. For research use only.

Tel: 609-228-6898

Fax: 609-228-5909

E-mail: tech@MedChemExpress.com

Address: 1 Deer Park Dr, Suite Q, Monmouth Junction, NJ 08852, USA