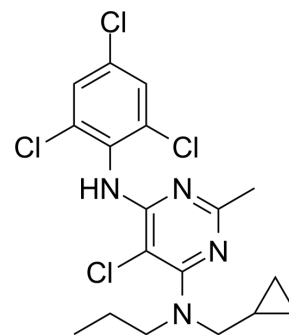


## NBI-27914

Cat. No.:	HY-135542
CAS No.:	184241-44-9
Molecular Formula:	C <sub>18</sub> H <sub>20</sub> Cl <sub>4</sub> N <sub>4</sub>
Molecular Weight:	434.19
Target:	CRFR
Pathway:	GPCR/G Protein
Storage:	Please store the product under the recommended conditions in the Certificate of Analysis.



### BIOLOGICAL ACTIVITY

#### Description

NBI-27914 is a potent and selective antagonist of CRFR1. The CRF receptors, CRFR1 and CRFR2, are members of the G protein-coupled receptor superfamily<sup>[1]</sup>.

### REFERENCES

[1]. Liaw CW, et al. Localization of agonist- and antagonist-binding domains of human corticotropin-releasing factor receptors. *Mol Endocrinol.* 1997;11(13):2048-2053.

**Caution: Product has not been fully validated for medical applications. For research use only.**

Tel: 609-228-6898

Fax: 609-228-5909

E-mail: tech@MedChemExpress.com

Address: 1 Deer Park Dr, Suite Q, Monmouth Junction, NJ 08852, USA